

MoonStone 42



5



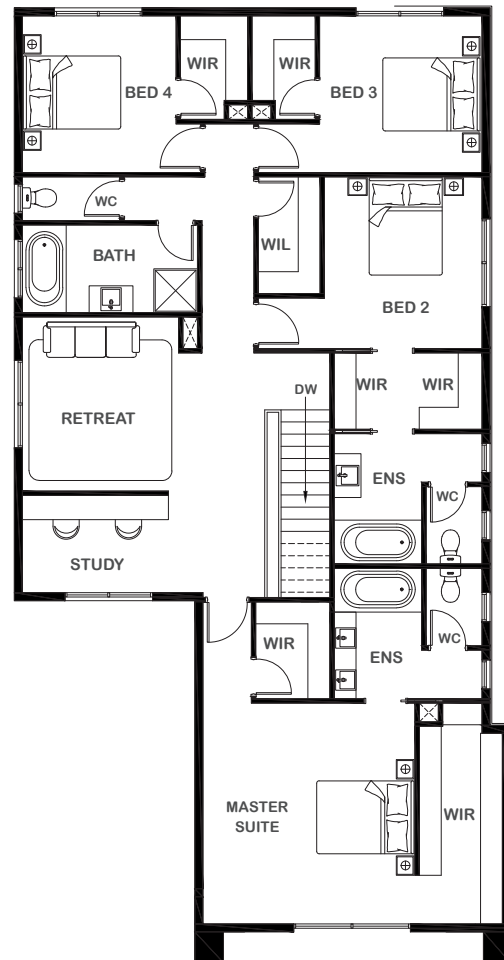
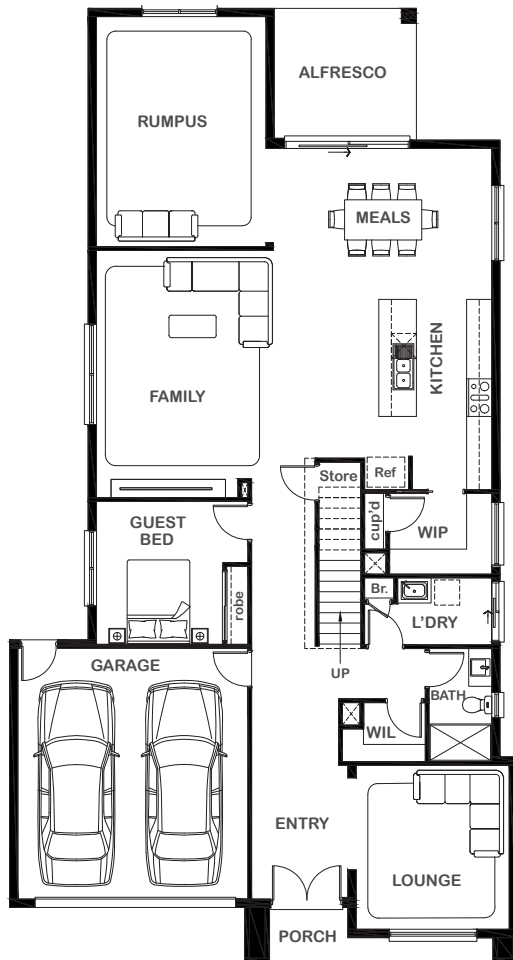
4



4



2



Overall Width x Length

12.15m x 22.82m

Total House Area

390.05m²

Suitable For Lot

14.0m x 30.0m

Room Sizes

| | |
|--------------|---------------|
| Master Suite | 4.36m x 4.54m |
| Bedroom 2 | 3.24m x 3.53m |
| Bedroom 3 | 3.34m x 3.22m |
| Bedroom 4 | 3.16m x 3.22m |
| Guest Bed | 3.02m x 3.42m |
| Rumpus | 4.05m x 5.50m |
| Lounge | 3.66m x 3.92m |
| Family | 4.23m x 5.91m |
| Retreat | 3.21m x 3.58m |
| Study | 3.71m x 2.00m |
| Meals | 5.22m x 3.61m |

Key Features

- Two-storey home
- Plenty of living space
- Spacious study room
- Large laundry
- Three large bedrooms plus one guest suite and grand private master suite
- Double garage
- Open-plan design
- modern kitchen with large walk-in pantry
- Multiple facade options

Specifications

| | | |
|--------------|----------------------------|----------------|
| Ground Floor | 175.79m ² | 18.92sq |
| First Floor | 162.34m ² | 17.47sq |
| Alfresco | 10.57m ² | 1.14sq |
| Garage | 35.71m ² | 3.84sq |
| Porch | 5.69m ² | 0.61sq |
| Total | 390.05m² | 41.98sq |



1800 XIRCON (1800 947 266)
xirconhomes.com.au

All images and illustrations featured on Xircon Homes' website and in any advertisements are solely for illustrative purposes and are intended to be used as a guide only. Photographs and floor plans may depict specifications not currently provided by Xircon Homes and not included in the price of your home. Façades may not be accurate. This is due to house type, size, house design and house width. Subject to estate and council guidelines. For detailed home pricing and façade information, please speak to a New Home Advisor.