

Alabaster 19



4



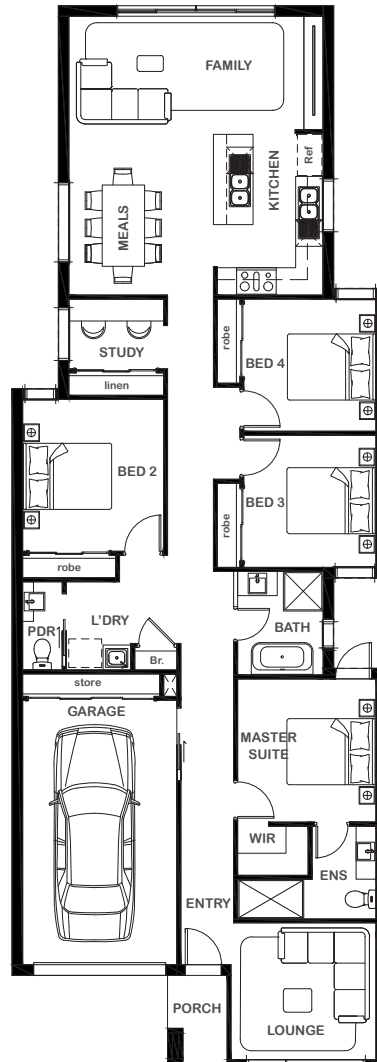
2



2



1



Overall Width x Length

8.50m x 24.24m

Total House Area

177.73m²

Suitable For Lot

8.5m x 30.0m

Room Sizes

Master Suite	3.14m x 3.25m
Bedroom 2	3.20m x 3.45m
Bedroom 3	3.00m x 3.00m
Bedroom 4	3.00m x 3.00m
Lounge	3.29m x 3.10m
Family	5.77m x 2.66m
Meals	3.28m x 3.66m
Study	2.15m x 1.55m

Key Features

Four-bedroom single storey home total
 Master suite with ensuite and walk-in robe
 Single garage with direct entry to home
 Open plan living and dining
 Study retreat
 Large and modern laundry
 Multiple facade options

Specifications

House	149.45m ²	16.08sq
Garage	25.58m ²	2.75sq
Porch	2.70m ²	0.29sq
Total	177.73m²	19.12sq



ESSENTIA

1800 XIRCON (1800 947 266)
xirconhomes.com.au