

Amber 19



3



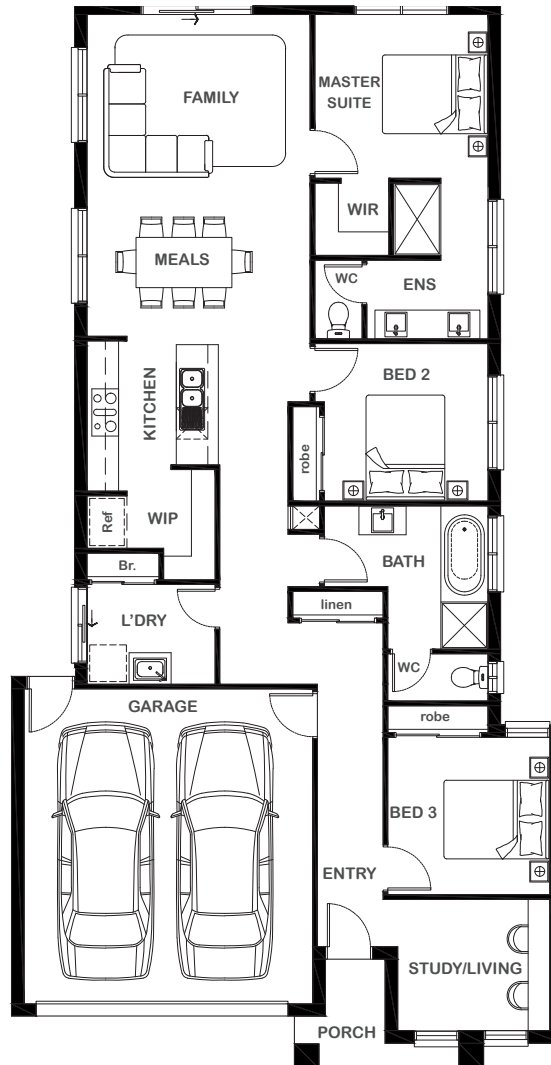
2



2



2



Overall Width x Length

10.50m x 20.32m

Total House Area

175.60m²

Suitable For Lot

10.5m x 28.0m

Room Sizes

Master Suite	3.29m x 3.12m
Bedroom 2	3.12m x 3.00m
Bedroom 3	3.09m x 3.00m
Family	4.25m x 3.30m
Study/Living	2.90m x 2.50m
Meals	4.25m x 2.83m

Key Features

- Master suite with ensuite and walk-in robe
- Double garage with direct entry to home
- Open plan living and dining
- Three-bedroom single storey home total
- Study retreat
- Large and modern laundry
- Multiple facade options

Specifications

House	134.45m ²	14.47sq
Garage	37.26m ²	4.01sq
Porch	3.86m ²	0.42sq
Total	175.60m²	18.9sq



1800 XIRCON (1800 947 266)
xirconhomes.com.au

Images are used for illustrative purposes and may depict upgrade options that are not supplied by Xircon Homes or included in the price of your home. This includes, but is not limited to, landscaping, pools, fencing, window furnishings, wall furnishings, decorative lighting, décor, furniture, driveways and screens. For detailed home pricing, please talk to a sales consultant. Xircon Homes Pty Ltd (referred to in these terms as Xircon Homes) Registered Building Practitioner No: CDB-U 60500