

# Amethyst 27



4



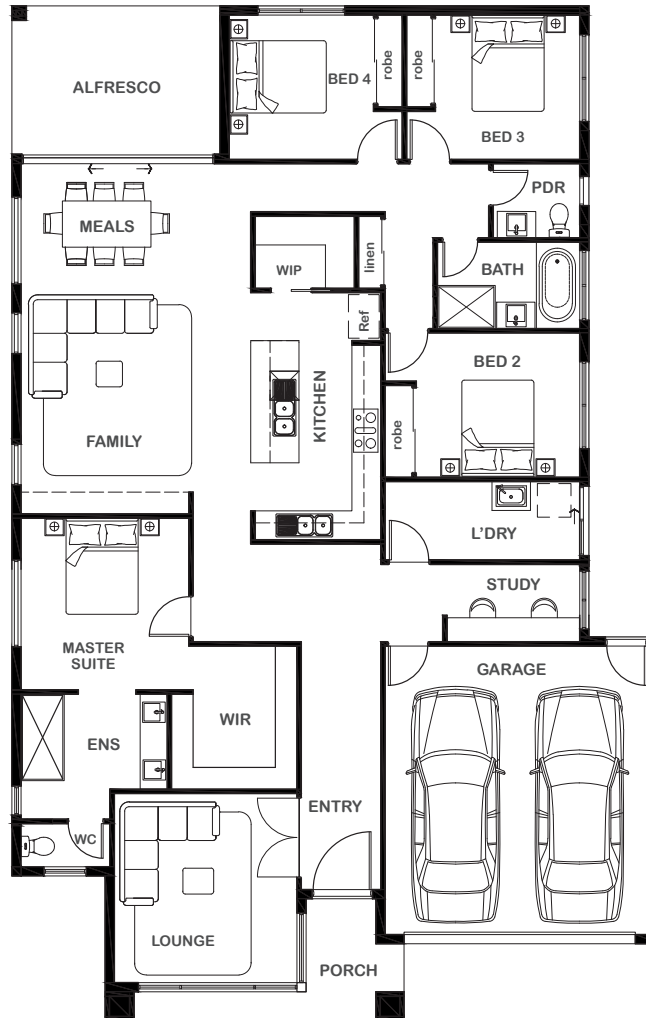
2



2



2



## Overall Width x Length

13.50m x 21.29m

## Total House Area

253.05m<sup>2</sup>

## Suitable For Lot

16.0m x 28.0m

## Room Sizes

Master Suite	3.49m x 3.76m
Bedroom 2	3.40m x 3.00m
Bedroom 3	3.00m x 3.00m
Bedroom 4	3.00m x 3.00m
Lounge	3.80m x 3.94m
Family	4.78m x 4.54m
Meals	4.78m x 2.68m
Study	2.76m x 1.80m

## Key Features

- Grand master suite with adjoining ensuite and walk-in robe
- Three spacious bedrooms
- Large sheltered alfresco connected to open plan dining and live area
- Study space
- Separate lounge located upon entrance
- Double garage
- Large laundry
- Multiple facade options

## Specifications

House	195.66m <sup>2</sup>	21.06sq
Garage	36.88m <sup>2</sup>	3.97sq
Alfresco	13.37m <sup>2</sup>	1.44sq
Porch	7.14m <sup>2</sup>	0.77sq
<b>Total</b>	<b>253.05m<sup>2</sup></b>	<b>27.24sq</b>



1800 XIRCON (1800 947 266)  
xirconhomes.com.au

All images and illustrations featured on Xircon Homes' website and in any advertisements are solely for illustrative purposes and are intended to be used as a guide only. Photographs and floor plans may depict specifications not currently provided by Xircon Homes and not included in the price of your home. Façades may not be accurate. This is due to house type, size, house design and house width. Subject to estate and council guidelines. For detailed home pricing and façade information, please speak to a New Home Advisor.