

# Ametrine 17



3



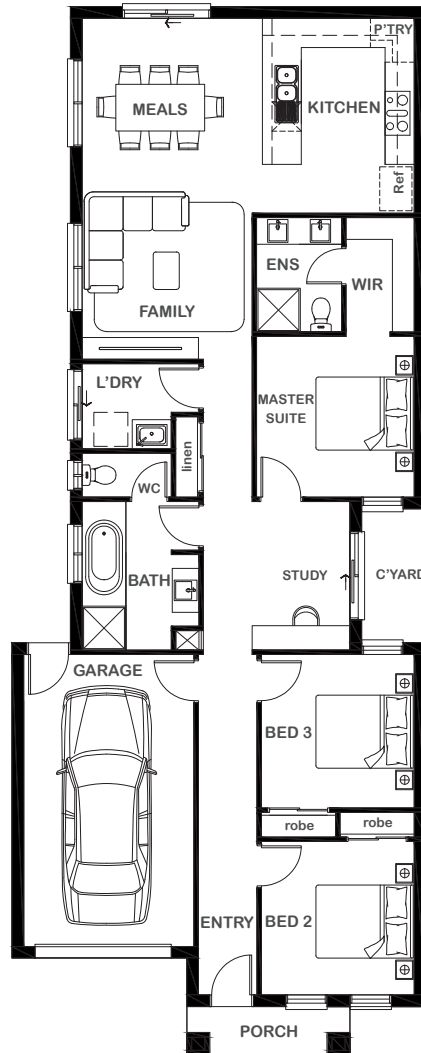
2



1



1



## Overall Width x Length

8.50m x 21.63m

## Total House Area

155.72m<sup>2</sup>

## Suitable For Lot

8.5m x 28.0m

## Room Sizes

Master Suite	3.16m x 3.30m
Bedroom 2	3.16m x 3.15m
Bedroom 3	3.16m x 3.15m
Family	3.49m x 4.00m
Study	2.01m x 3.02m
Meals	3.70m x 3.00m

## Key Features

Three-bedroom single storey home total  
Private ensuite and walk-in robe to master suite  
Single garage  
Open plan living, dining and kitchen  
Generous study space  
Multiple facade options

## Specifications

House	127.20m <sup>2</sup>	13.69sq
Garage	23.58m <sup>2</sup>	2.53sq
Porch	3.35m <sup>2</sup>	0.36sq
<b>Total</b>	<b>155.72m<sup>2</sup></b>	<b>16.76sq</b>



ESSENTIA

1800 XIRCON (1800 947 266)  
xirconhomes.com.au

All images and illustrations featured on Xircon Homes' website and in any advertisements are solely for illustrative purposes and are intended to be used as a guide only. Photographs and floor plans may depict specifications not currently provided by Xircon Homes and not included in the price of your home. Façades may not be accurate. This is due to house type, size, house design and house width. Subject to estate and council guidelines. For detailed home pricing and façade information, please speak to a New Home Advisor.