

Beryl 22



3



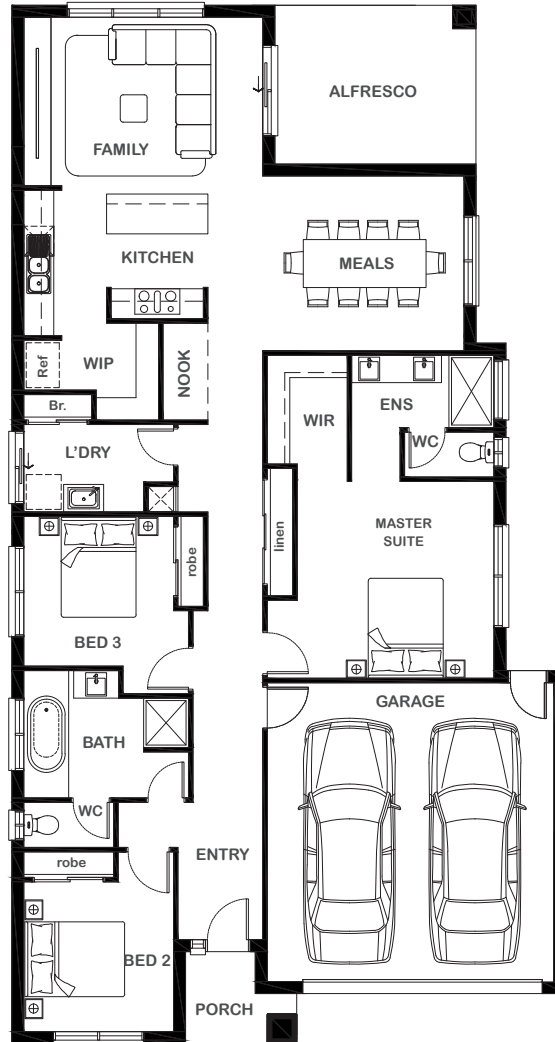
2



1



2



Overall Width x Length

11.15m x 20.79m

Total House Area

206.40m²

Suitable For Lot

12.5m x 28.0m

Room Sizes

Master Suite	3.94m x 3.96m
Bedroom 2	3.01m x 3.04m
Bedroom 3	3.00m x 3.04m
Family	4.91m x 3.37m
Meals	3.96m x 3.51m
Nook	0.90m x 1.95m

Key Features

Walk-in robe and ensuite to sweeping master suite
 Three-bedroom single storey home
 Open plan living, dining and kitchen zones
 Double garage
 All-seasonal alfresco
 Modern bathroom
 Large laundry
 Study nook
 Multiple facade options

Specifications

House	152.08m ²	16.36sq
Garage	38.09m ²	4.09sq
Alfresco	12.81m ²	1.38sq
Porch	3.42m ²	0.37sq
Total	206.40m²	22.20sq



ESSENTIA

1800 XIRCON (1800 947 266)
xirconhomes.com.au