

# Cameliana 22



4



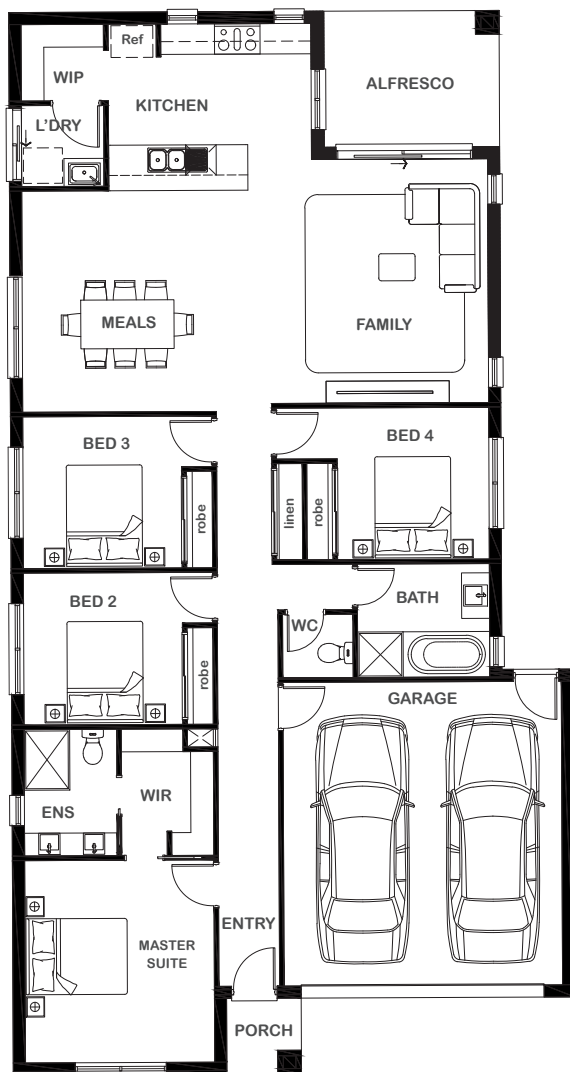
2



1



2



## Overall Width x Length

11.10m x 21.0m

## Total House Area

206.63m<sup>2</sup>

## Suitable For Lot

12.5m x 28.0m

## Room Sizes

Master Suite	3.74m x 4.00m
Bedroom 2	3.14m x 3.00m
Bedroom 3	3.14m x 3.00m
Bedroom 4	3.00m x 3.00m
Family	4.74m x 4.82m
Meals	4.47m x 4.37m

## Key Features

Three spacious bedrooms  
 Grand private master suite with walk-in robe and ensuite  
 Large double garage  
 Large and spacious open plan living, dining and kitchen area  
 Generous sized alfresco  
 Modern kitchen with sizable walk-in pantry  
 Multiple facade options

## Specifications

House	157.91m <sup>2</sup>	16.99sq
Garage	37.15m <sup>2</sup>	4.00sq
Alfresco	9.36m <sup>2</sup>	1.01sq
Porch	2.21m <sup>2</sup>	0.24sq
<b>Total</b>	<b>206.63m<sup>2</sup></b>	<b>22.24sq</b>



ESSENTIA

1800 XIRCON (1800 947 266)  
[xirconhomes.com.au](http://xirconhomes.com.au)

All images and illustrations featured on Xircon Homes' website and in any advertisements are solely for illustrative purposes and are intended to be used as a guide only. Photographs and floor plans may depict specifications not currently provided by Xircon Homes and not included in the price of your home. Façades may not be accurate. This is due to house type, size, house design and house width. Subject to estate and council guidelines. For detailed home pricing and façade information, please speak to a New Home Advisor.