

Cerulean 30



4



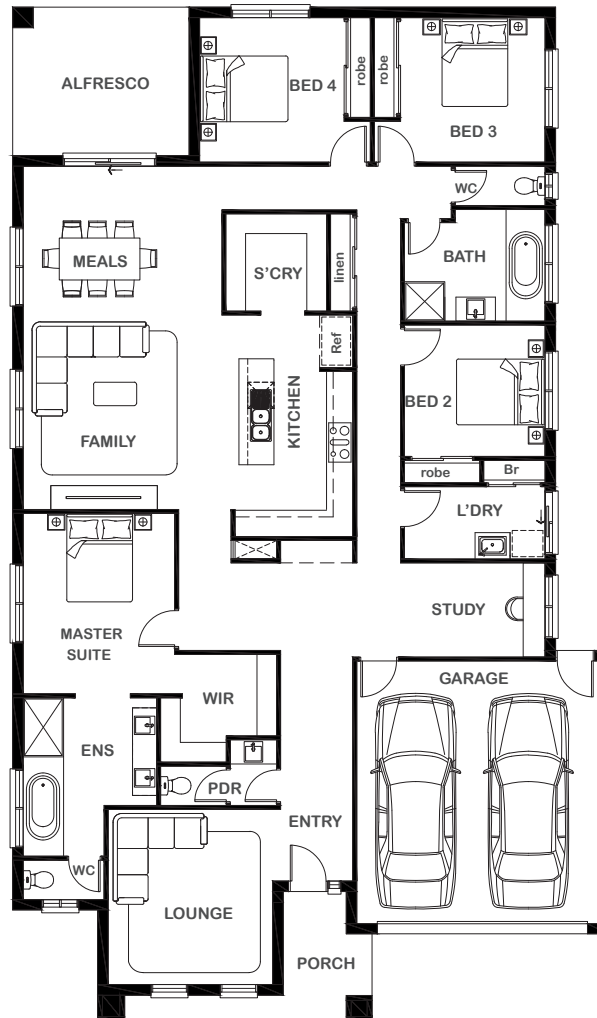
2



2



2



Overall Width x Length

13.6m x 23.16m

Total House Area

281.63m²

Suitable For Lot

16.0m x 30.0m

Room Sizes

Master Suite	3.46m x 4.12m
Bedroom 2	3.21m x 3.00m
Bedroom 3	3.30m x 3.30m
Bedroom 4	3.30m x 3.30m
Lounge	3.76m x 4.00m
Family	7.84m x 4.44m
Meals	4.54m x 3.40m
Study	3.30m x 2.15m

Key Features

- Four-bedroom single storey home total
- Master suite with adjoining ensuite and walk-in robe
- One large family area and large separate lounge upon entrance
- Double garage
- Open plan living, dining and kitchen
- Large walk-in pantry
- Multiple facade options

Specifications

House	222.73m ²	23.97sq
Garage	37.24m ²	4.01sq
Alfresco	13.66m ²	1.47sq
Porch	8.0m ²	0.86sq
Total	281.63m²	30.31sq



1800 XIRCON (1800 947 266)
xirconhomes.com.au

All images and illustrations featured on Xircon Homes' website and in any advertisements are solely for illustrative purposes and are intended to be used as a guide only. Photographs and floor plans may depict specifications not currently provided by Xircon Homes and not included in the price of your home. Façades may not be accurate. This is due to house type, size, house design and house width. Subject to estate and council guidelines. For detailed home pricing and façade information, please speak to a New Home Advisor.