

# Citrine 15



3



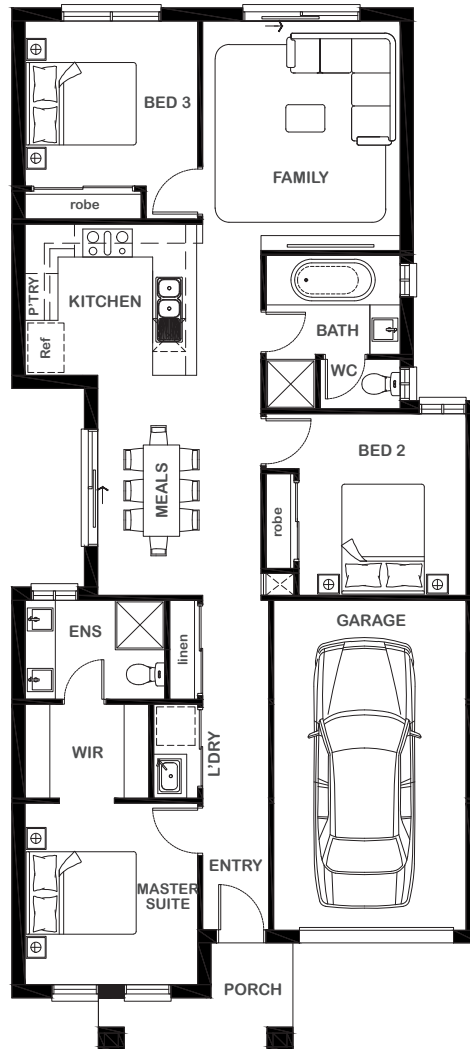
2



1



1



## Overall Width x Length

8.50m x 19.0m

## Total House Area

139.81m<sup>2</sup>

## Suitable For Lot

8.5m x 25.0m

## Room Sizes

Master Suite	3.14m x 3.30m
Bedroom 2	3.04m x 3.30m
Bedroom 3	3.14m x 3.00m
Meals	2.97m x 4.00m
Family	3.59m x 4.17m

## Key Features

Two generous bedrooms and one private master suite  
 Large family room  
 Large kitchen and adjoining meals area  
 Single garage  
 Multiple facade options

## Specifications

House	111.51m <sup>2</sup>	12.00sq
Garage	23.28m <sup>2</sup>	2.50sq
Porch	5.02m <sup>2</sup>	0.54sq
<b>Total</b>	<b>139.81m<sup>2</sup></b>	<b>15.04sq</b>



ESSENTIA

1800 XIRCON (1800 947 266)  
[xirconhomes.com.au](http://xirconhomes.com.au)

All images and illustrations featured on Xircon Homes' website and in any advertisements are solely for illustrative purposes and are intended to be used as a guide only. Photographs and floor plans may depict specifications not currently provided by Xircon Homes and not included in the price of your home. Façades may not be accurate. This is due to house type, size, house design and house width. Subject to estate and council guidelines. For detailed home pricing and façade information, please speak to a New Home Advisor.