

Coral 15



3



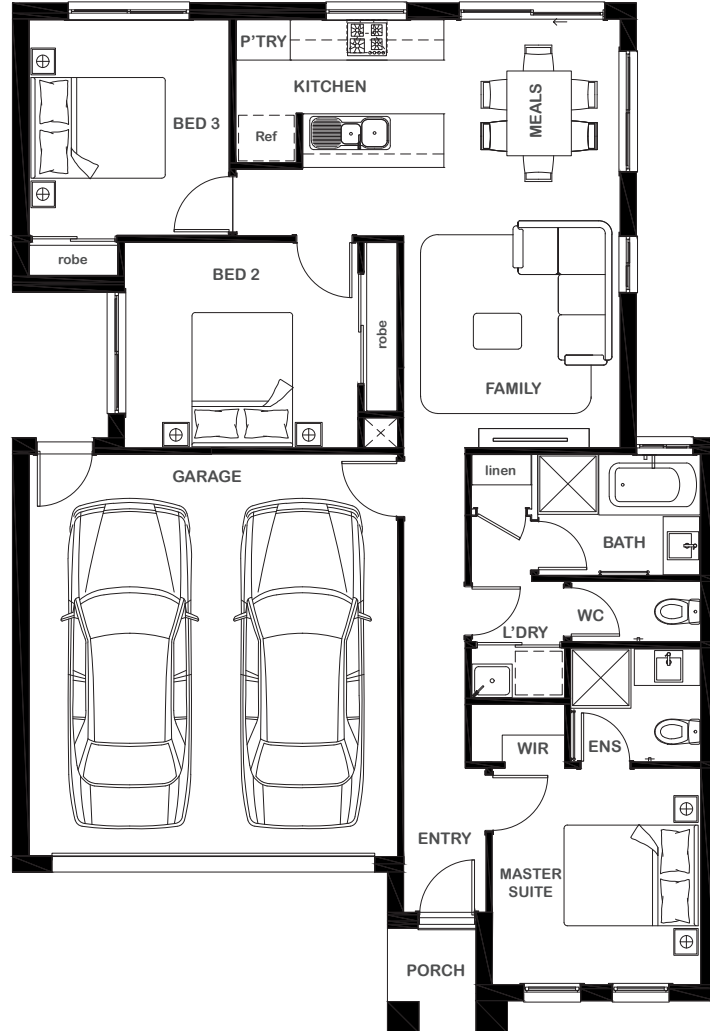
2



1



2



Overall Width x Length

10.50m x 15.35m

Total House Area

135.38m²

Suitable For Lot

10.5m x 21.0m

Room Sizes

Master Suite	3.23m x 3.11m
Bedroom 2	3.07m x 3.48m
Bedroom 3	3.23m x 3.00m
Family	4.18m x 3.23m
Meals	2.21m x 2.63m

Key Features

- Two generous size bedrooms
- Private ensuite and walk-in robe to master suite
- Open-plan design
- Modern kitchen
- Double garage
- Multiple facade options

Specifications

House	97.03m ²	10.44sq
Garage	36.07m ²	3.88sq
Porch	2.28m ²	0.24sq
Total	135.388m²	14.57sq



ESSENTIA

1800 XIRCON (1800 947 266)
xirconhomes.com.au

All images and illustrations featured on Xircon Homes' website and in any advertisements are solely for illustrative purposes and are intended to be used as a guide only. Photographs and floor plans may depict specifications not currently provided by Xircon Homes and not included in the price of your home. Façades may not be accurate. This is due to house type, size, house design and house width. Subject to estate and council guidelines. For detailed home pricing and façade information, please speak to a New Home Advisor.