

Druzy 30



4



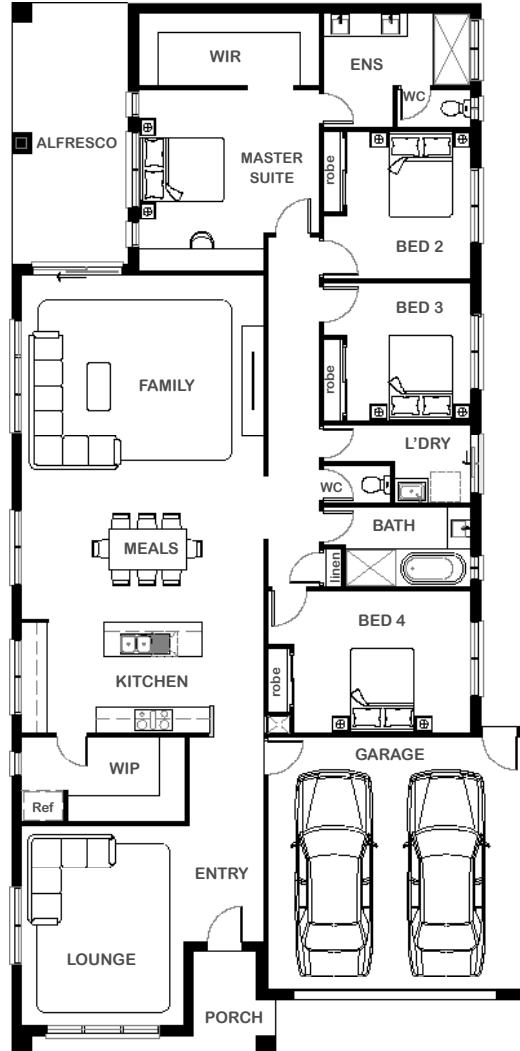
2



2



2



Overall Width x Length

12.3m x 25.0m

Total House Area

297.38m²

Suitable For Lot

14.0m x 34.0m

Room Sizes

Master Suite	4.28m x 3.42m
Bedroom 2	2.94m x 3.26m
Bedroom 3	2.94m x 3.52m
Bedroom 4	4.20m x 3.36m
Lounge	3.83m x 4.75m
Family	5.76m x 4.80m
Meals	5.76m x 3.38m

Key Features

Four-bedroom single storey home total
 Master suite with adjoining ensuite and walk-in robe
 One large family area and large separate lounge
 Double garage
 Open plan living, dining and kitchen
 Large walk-in pantry
 Multiple facade options

Specifications

House	216.54m ²	23.30sq
Garage	39.22m ²	4.22sq
Alfresco	17.26m ²	1.86sq
Porch	6.36m ²	0.69sq
Total	279.38m²	30.08sq



1800 XIRCON (1800 947 266)
xirconhomes.com.au

All images and illustrations featured on Xircon Homes' website and in any advertisements are solely for illustrative purposes and are intended to be used as a guide only. Photographs and floor plans may depict specifications not currently provided by Xircon Homes and not included in the price of your home. Façades may not be accurate. This is due to house type, size, house design and house width. Subject to estate and council guidelines. For detailed home pricing and façade information, please speak to a New Home Advisor.