

# Emerald 43



5



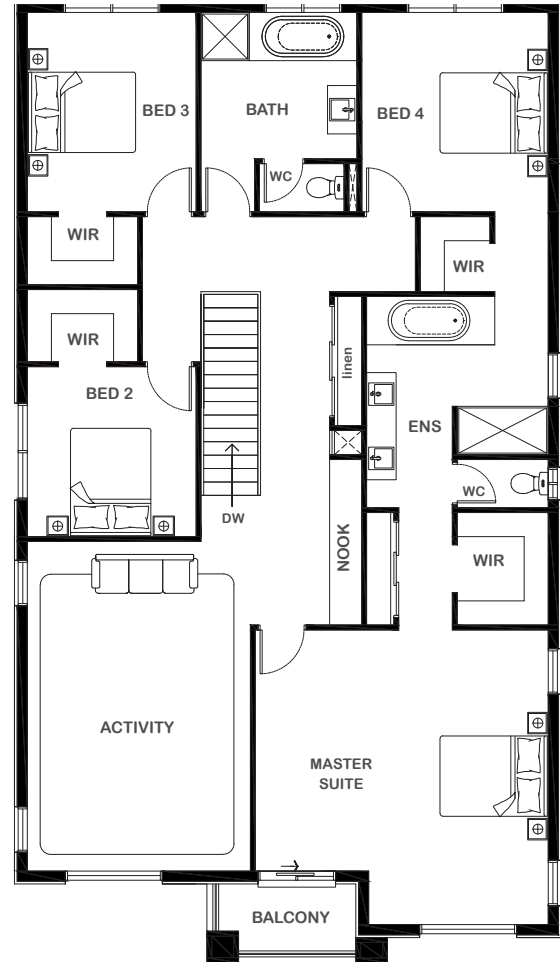
3



3



2



## Overall Width x Length

12.0m x 20.98m

## Total House Area

395.27m<sup>2</sup>

## Suitable For Lot

14.0m x 28.0m

## Room Sizes

Master Suite	5.47m x 4.50m
Bedroom 2	3.15m x 3.17m
Bedroom 3	3.15m x 3.72m
Bedroom 4	3.48m x 3.72m
Guest Bed	3.99m x 3.50m
Lounge	3.35m x 4.00m
Activity	4.16m x 6.15m
Family	4.08m x 4.50m
Study	3.39m x 2.47m
Meals	5.64m x 4.01m

## Key Features

Two-storey home  
Plenty of living space  
Spacious study room  
Large laundry  
Three large bedrooms plus one guest suite and grand private master suites  
Double garage  
Open-plan design  
Centralised modern kitchen  
Multiple facade options

## Specifications

Ground Floor	164.99m <sup>2</sup>	17.76sq
First Floor	172.13m <sup>2</sup>	18.53sq
Alfresco	12.24m <sup>2</sup>	1.32sq
Balcony	4.36m <sup>2</sup>	0.47sq
Garage	37.15m <sup>2</sup>	4.0sq
Porch	4.40m <sup>2</sup>	0.47sq
<b>Total</b>	<b>395.27m<sup>2</sup></b>	<b>42.55sq</b>



1800 XIRCON (1800 947 266)  
xirconhomes.com.au