

Esme 12



3



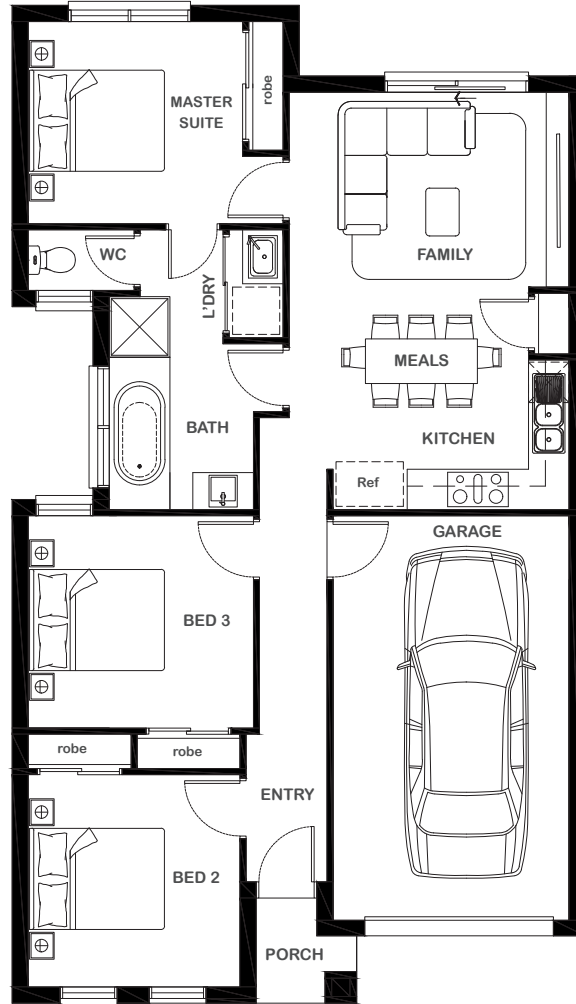
1



1



1



Overall Width x Length

8.50m x 14.80m

Total House Area

114.51m²

Suitable For Lot

8.5m x 21.0m

Room Sizes

Master Suite	3.18m x 3.00m
Bedroom 2	3.14m x 3.15m
Bedroom 3	3.34m x 3.15m
Family	4.15m x 2.89m
Kitchen/Meals	3.55m x 2.70m

Key Features

Three generous bedrooms
 One private master suite
 Open plan living, dining and kitchen area
 Single garage
 Multiple facade options

Specifications

House	89.21m ²	9.60sq
Garage	23.30m ²	2.50sq
Porch	2.0m ²	0.22sq
Total	114.51m²	12.32sq



ESSENTIA

1800 XIRCON (1800 947 266)
xirconhomes.com.au

All images and illustrations featured on Xircon Homes' website and in any advertisements are solely for illustrative purposes and are intended to be used as a guide only. Photographs and floor plans may depict specifications not currently provided by Xircon Homes and not included in the price of your home. Façades may not be accurate. This is due to house type, size, house design and house width. Subject to estate and council guidelines. For detailed home pricing and façade information, please speak to a New Home Advisor.