

# Garnet 21



3



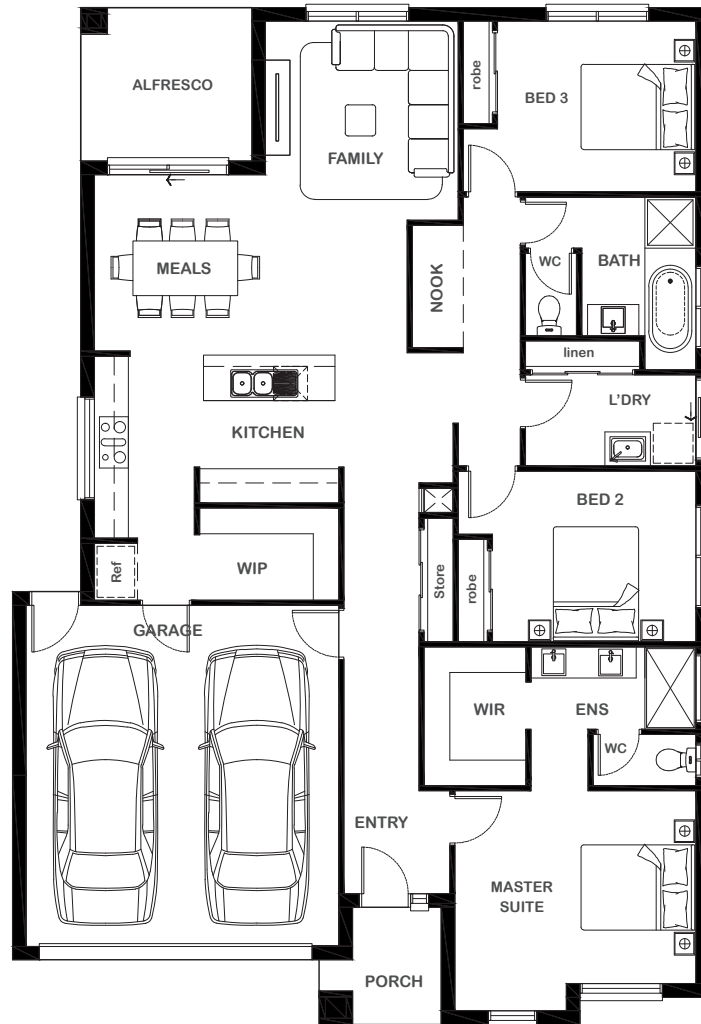
2



1



2



## Overall Width x Length

12.26m x 17.81m

## Total House Area

199.65m<sup>2</sup>

## Suitable For Lot

14.0m x 25.0m

## Room Sizes

Master Suite	4.24m x 3.39m
Bedroom 2	3.58m x 3.00m
Bedroom 3	3.49m x 3.00m
Family	3.39m x 3.50m
Meals	5.50m x 3.10m
Nook	0.90m x 2.15m

## Key Features

Resort-style master suite with walk-in robe and ensuite  
 Double garage  
 Two generous sized bedrooms  
 Modern centralised kitchen with walk-in pantry  
 Open plan living and dining with connecting alfresco  
 Spacious nook  
 Spacious laundry  
 Multiple facade options

## Specifications

House	150.4m <sup>2</sup>	16.19sq
Garage	37.24m <sup>2</sup>	4.01sq
Alfresco	8.13m <sup>2</sup>	0.88sq
Porch	3.89m <sup>2</sup>	0.42sq
<b>Total</b>	<b>199.65m<sup>2</sup></b>	<b>21.49sq</b>



1800 XIRCON (1800 947 266)  
[xirconhomes.com.au](http://xirconhomes.com.au)

All images and illustrations featured on Xircon Homes' website and in any advertisements are solely for illustrative purposes and are intended to be used as a guide only. Photographs and floor plans may depict specifications not currently provided by Xircon Homes and not included in the price of your home. Façades may not be accurate. This is due to house type, size, house design and house width. Subject to estate and council guidelines. For detailed home pricing and façade information, please speak to a New Home Advisor.