

Gem 33



5



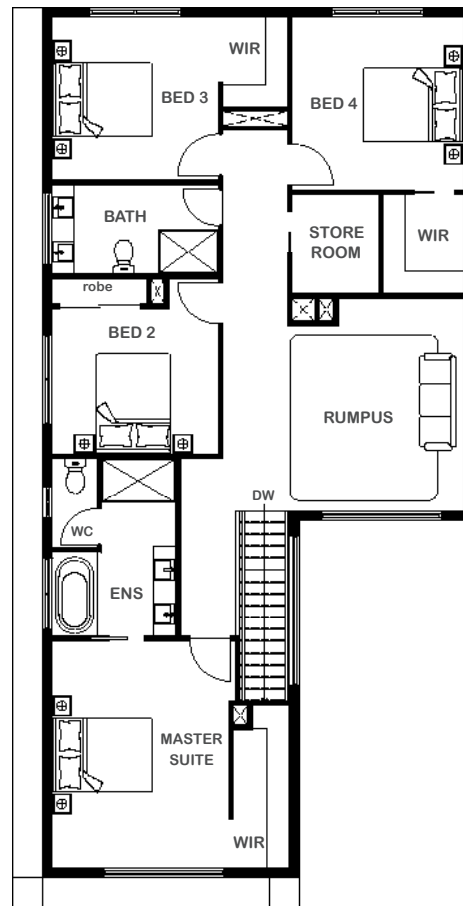
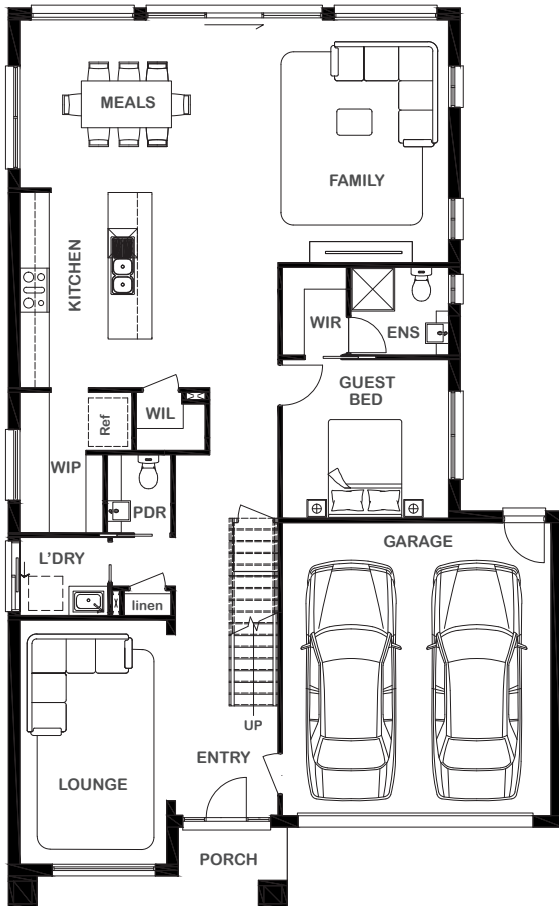
3



3



2



Overall Width x Length

11.35m x 18.50m

Total House Area

305.32m²

Suitable For Lot

12.5m x 28.0m

Room Sizes

Master Suite	4.60m x 3.55m
Bedroom 2	3.35m x 2.94m
Bedroom 3	3.35m x 3.27m
Bedroom 4	3.44m x 3.47m
Guest Bed	3.40m x 3.25m
Rumpus	4.83m x 4.29m
Lounge	3.00m x 5.00m
Family	5.29m x 4.97m
Meals	3.50m x 3.44m
Store	1.74m x 2.00m

Key Features

- Two-storey home
- Plenty of living space
- Spacious Rumpus room
- Large laundry
- Four large bedrooms plus one guest suite and grand private master suites
- Double garage
- Open-plan design
- Centralised modern kitchen
- Multiple facade options

Specifications

Ground Floor	135.49m ²	14.58sq
First Floor	126.52m ²	13.62sq
Garage	37.20m ²	4.00sq
Porch	6.11m ²	0.66sq
Total	305.32m²	32.86sq



1800 XIRCON (1800 947 266)
xirconhomes.com.au

All images and illustrations featured on Xircon Homes' website and in any advertisements are solely for illustrative purposes and are intended to be used as a guide only. Photographs and floor plans may depict specifications not currently provided by Xircon Homes and not included in the price of your home. Façades may not be accurate. This is due to house type, size, house design and house width. Subject to estate and council guidelines. For detailed home pricing and façade information, please speak to a New Home Advisor.