

# GoldSand 36



5



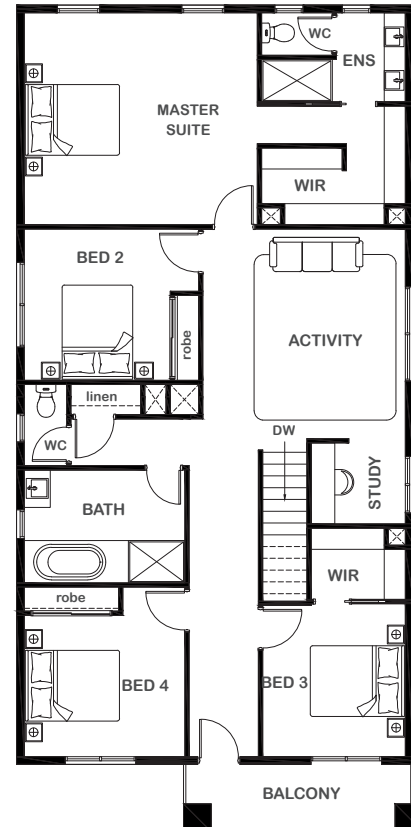
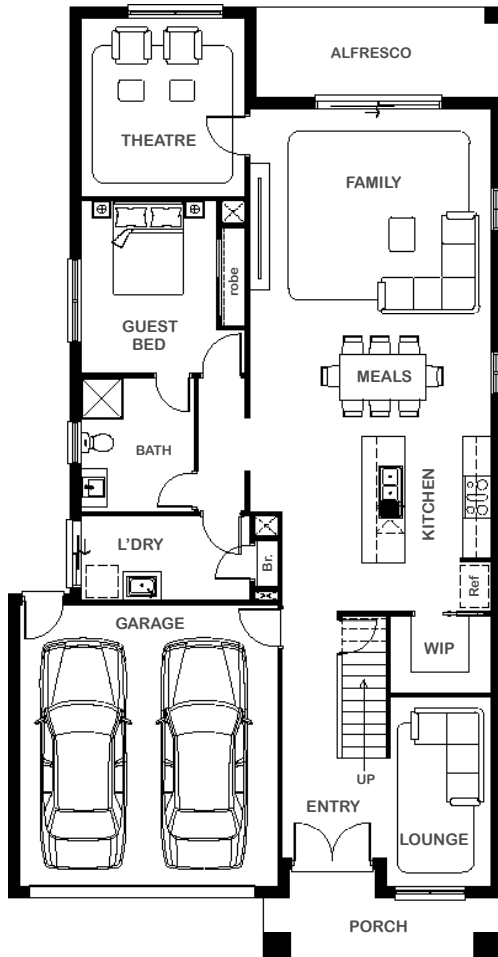
3



4



2



### Overall Width x Length

10.50m x 20.35m

### Total House Area

332.88m<sup>2</sup>

### Suitable For Lot

12.5m x 28.0m

### Room Sizes

Master Suite	4.50m x 4.95m
Bedroom 2	3.10m x 3.21m
Bedroom 3	3.03m x 3.25m
Bedroom 4	3.41m x 3.00m
Guest Bed	2.90m x 3.70m
Activity	4.30m x 4.45m
Theatre	3.50m x 3.79m
Lounge	2.22m x 4.02m
Family	4.62m x 5.13m
Study	2.00m x 1.72m
Meals	2.38m x 5.13m

### Key Features

Grand master suite with ensuite, walk-in robe  
 Spacious guest suite with ensuite and walk-in robe  
 Three other generous sized bedrooms  
 Large family area located to the rear of the house  
 Modern kitchen with scullery  
 Open-plan living  
 Separate formal lounge  
 Alfresco  
 Double garage  
 Large laundry  
 Multiple facade options

### Specifications

Ground Floor	134.80m <sup>2</sup>	14.51sq
First Floor	135.73m <sup>2</sup>	14.61sq
Alfresco	10.07m <sup>2</sup>	1.08sq
Balcony	7.07m <sup>2</sup>	0.76sq
Garage	37.26m <sup>2</sup>	4.01sq
Porch	7.95m <sup>2</sup>	0.86sq
<b>Total</b>	<b>332.88m<sup>2</sup></b>	<b>35.83sq</b>



1800 XIRCON (1800 947 266)  
[xirconhomes.com.au](http://xirconhomes.com.au)

All images and illustrations featured on Xircon Homes' website and in any advertisements are solely for illustrative purposes and are intended to be used as a guide only. Photographs and floor plans may depict specifications not currently provided by Xircon Homes and not included in the price of your home. Façades may not be accurate. This is due to house type, size, house design and house width. Subject to estate and council guidelines. For detailed home pricing and façade information, please speak to a New Home Advisor.