

Jade 24



4



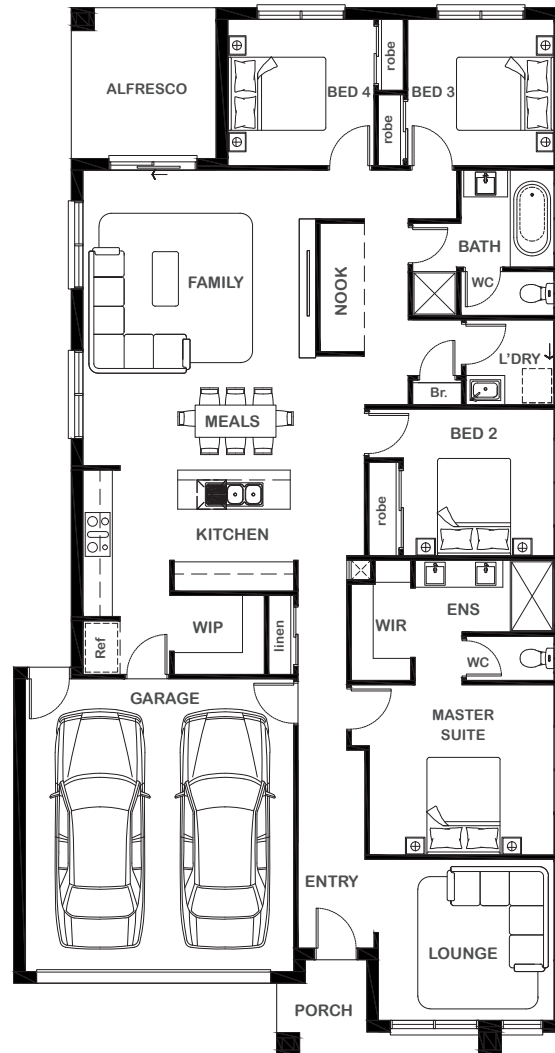
2



2



2



Overall Width x Length

11.32m x 21.48m

Total House Area

218.38m²

Suitable For Lot

12.5m x 28.0m

Room Sizes

Master Suite	3.69m x 3.49m
Bedroom 2	3.09m x 3.01m
Bedroom 3	3.00m x 3.00m
Bedroom 4	3.00m x 3.00m
Lounge	3.59m x 3.29m
Family	4.77m x 3.81m
Meals	4.77m x 2.30m

Key Features

Four spacious bedrooms total
 One private master suite with resort-style ensuite and walk-in robe
 Double garage
 All-seasonal alfresco
 Open living and dining area
 Contemporary centralised kitchen with walk-in pantry
 Private lounge upon entrance
 Multiple facade options to be added

Specifications

House	168.37m ²	18.12sq
Garage	36.15m ²	3.89sq
Alfresco	9.18m ²	0.99sq
Porch	4.68m ²	0.50sq
Total	218.38m²	23.50sq



1800 XIRCON (1800 947 266)
xirconhomes.com.au

All images and illustrations featured on Xircon Homes' website and in any advertisements are solely for illustrative purposes and are intended to be used as a guide only. Photographs and floor plans may depict specifications not currently provided by Xircon Homes and not included in the price of your home. Façades may not be accurate. This is due to house type, size, house design and house width. Subject to estate and council guidelines. For detailed home pricing and façade information, please speak to a New Home Advisor.