

# Jasper 26



4



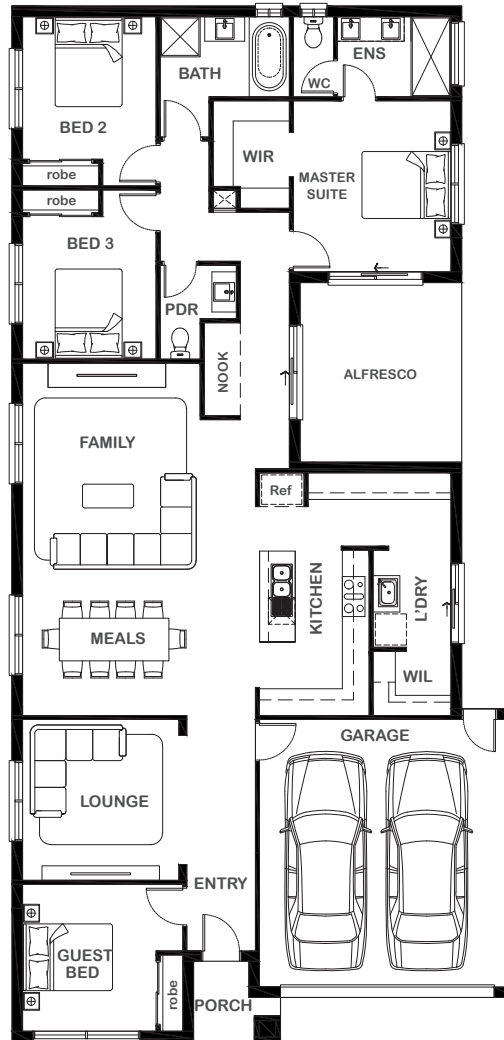
2



2



2



## Overall Width x Length

11.30m x 23.26m

## Total House Area

238.55m<sup>2</sup>

## Suitable For Lot

12.5m x 32.0m

## Room Sizes

Master Suite	3.54m x 3.84m
Bedroom 2	3.00m x 3.20m
Bedroom 3	3.00m x 3.20m
Guest Bed	3.30m x 3.00m
Lounge	3.51m x 3.61m
Family	3.99m x 4.88m
Meals	3.69m x 3.03m

## Key Features

- Guest bed located upon entrance
- Grand private master suite
- Two other beds located at the back of the house for privacy
- Double garage
- Large alfresco
- Kitchen, dining, and family integrated space
- Separate lounge
- Multiple facade options

## Specifications

House	184.87m <sup>2</sup>	19.89sq
Garage	36.10m <sup>2</sup>	3.88sq
Alfresco	14.63m <sup>2</sup>	1.57sq
Porch	2.95m <sup>2</sup>	0.32sq
<b>Total</b>	<b>238.55m<sup>2</sup></b>	<b>25.67sq</b>



1800 XIRCON (1800 947 266)  
xirconhomes.com.au

All images and illustrations featured on Xircon Homes' website and in any advertisements are solely for illustrative purposes and are intended to be used as a guide only. Photographs and floor plans may depict specifications not currently provided by Xircon Homes and not included in the price of your home. Façades may not be accurate. This is due to house type, size, house design and house width. Subject to estate and council guidelines. For detailed home pricing and façade information, please speak to a New Home Advisor.