

# Kunzite 33



4



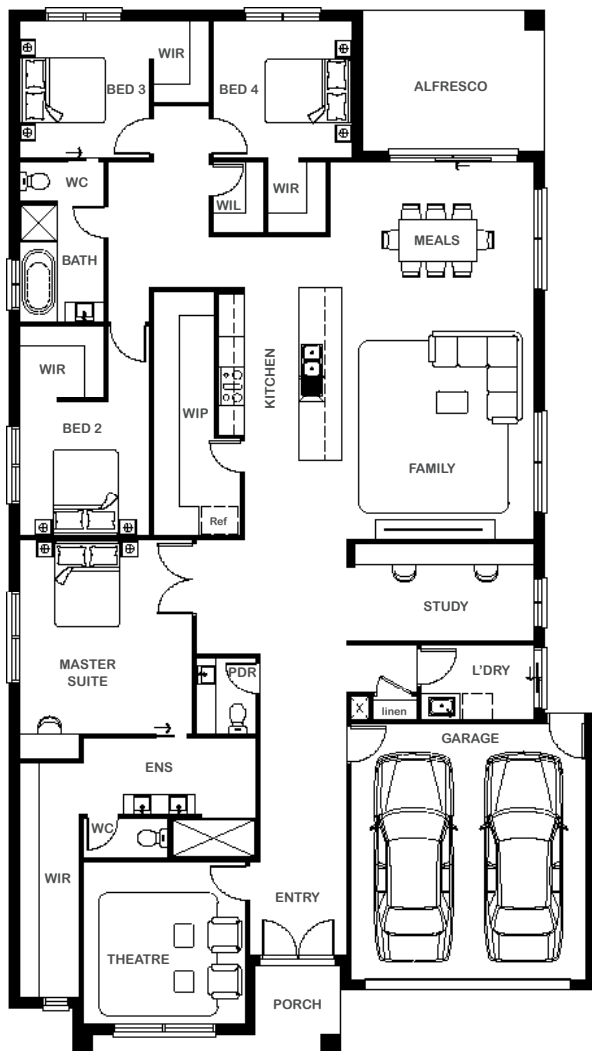
2



2



2



## Overall Width x Length

13.73m x 24.4m

## Total House Area

304.77m<sup>2</sup>

## Suitable For Lot

16.0m x 32.0m

## Room Sizes

Master Suite	4.06m x 4.54m
Bedroom 2	3.06m x 3.14m
Bedroom 3	3.04m x 3.20m
Bedroom 4	3.26m x 3.20m
Theatre	3.79m x 3.80m
Family	4.50m x 5.90m
Meals	4.79m x 2.93m
Study	4.21m x 2.30m

## Key Features

Large and spacious open plan dining and living area  
 Luxurious central kitchen and walk-in pantry  
 Grand master bedroom with large walk-in robe and ensuite  
 Double garage  
 Theatre room designed for the ultimate cinematic experience  
 Spacious study room perfect for some quiet time  
 Multiple facade options

## Specifications

House	247.43m <sup>2</sup>	26.63sq
Garage	37.18m <sup>2</sup>	4.00sq
Alfresco	14.04m <sup>2</sup>	1.51sq
Porch	6.12m <sup>2</sup>	0.66sq
<b>Total</b>	<b>304.77m<sup>2</sup></b>	<b>32.80sq</b>



1800 XIRCON (1800 947 266)  
[xirconhomes.com.au](http://xirconhomes.com.au)

All images and illustrations featured on Xircon Homes' website and in any advertisements are solely for illustrative purposes and are intended to be used as a guide only. Photographs and floor plans may depict specifications not currently provided by Xircon Homes and not included in the price of your home. Façades may not be accurate. This is due to house type, size, house design and house width. Subject to estate and council guidelines. For detailed home pricing and façade information, please speak to a New Home Advisor.