

Labradorite 19



3



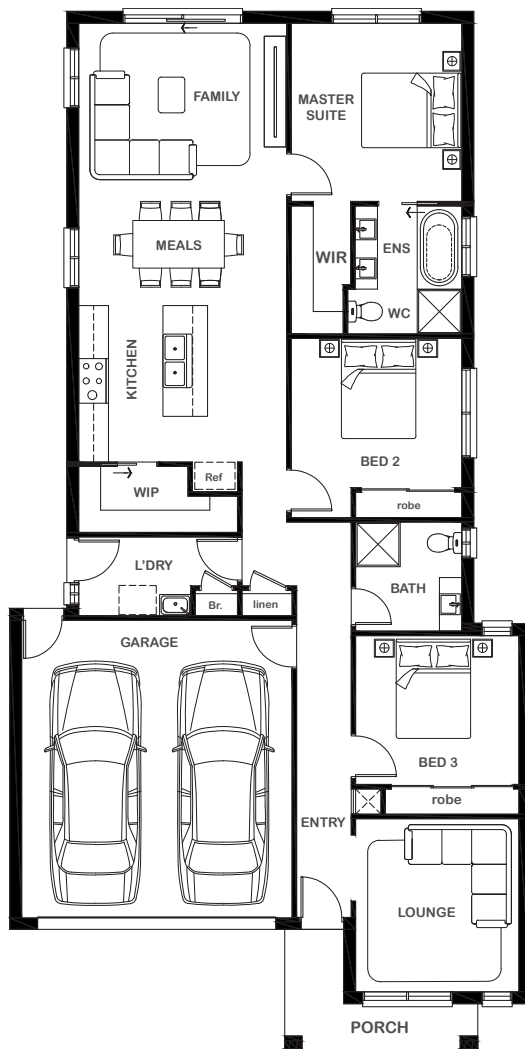
2



2



2



Overall Width x Length

10.50m x 21.0m

Total House Area

177.56m²

Suitable For Lot

10.5m x 28.0m

Room Sizes

Master Suite	3.44m x 3.59m
Bedroom 2	3.44m x 3.01m
Bedroom 3	3.29m x 3.00m
Lounge	3.29m x 3.49m
Family	4.19m x 3.50m
Meals	4.19m x 2.20m

Key Features

- Master suite with ensuite and walk-in robe
- Double garage with direct entry to home
- Open plan living and dining
- Three-bedroom single storey home total
- Separate lounge located upon entrance
- Large and modern laundry
- Multiple facade options

Specifications

House	135.15m ²	14.55sq
Garage	36.74m ²	3.95sq
Porch	5.67m ²	0.61sq
Total	177.56m²	19.11sq



ESSENTIA

1800 XIRCON (1800 947 266)
xirconhomes.com.au

All images and illustrations featured on Xircon Homes' website and in any advertisements are solely for illustrative purposes and are intended to be used as a guide only. Photographs and floor plans may depict specifications not currently provided by Xircon Homes and not included in the price of your home. Façades may not be accurate. This is due to house type, size, house design and house width. Subject to estate and council guidelines. For detailed home pricing and façade information, please speak to a New Home Advisor.