

# Mahopany 20



4



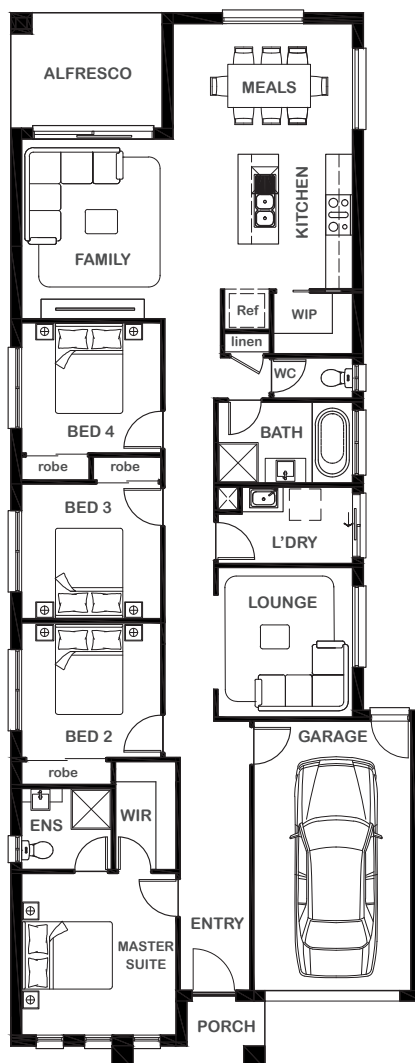
2



2



1



## Overall Width x Length

9.15m x 23.5m

## Total House Area

188.46m<sup>2</sup>

## Suitable For Lot

10.5m x 32.0m

## Room Sizes

Master Suite	3.44m x 3.60m
Bedroom 2	3.10m x 3.00m
Bedroom 3	3.10m x 3.00m
Bedroom 4	3.10m x 2.90m
Lounge	3.00m x 3.33m
Family	4.43m x 4.00m
Meals	4.00m x 2.91m

## Key Features

Three great sized bedrooms, including one master suite with ensuite and walk-in robe  
 Single garage  
 Contemporary kitchen and open plan dining and family area  
 Spacious lounge separate from the rest of the home  
 Alfresco perfect for dining outside  
 Multiple facade options

## Specifications

House	152.01m <sup>2</sup>	16.36sq
Garage	24.44m <sup>2</sup>	2.63sq
Alfresco	8.57m <sup>2</sup>	0.92sq
Porch	3.44m <sup>2</sup>	0.37sq
<b>Total</b>	<b>188.46m<sup>2</sup></b>	<b>20.28sq</b>



1800 XIRCON (1800 947 266)  
[xirconhomes.com.au](http://xirconhomes.com.au)

All images and illustrations featured on Xircon Homes' website and in any advertisements are solely for illustrative purposes and are intended to be used as a guide only. Photographs and floor plans may depict specifications not currently provided by Xircon Homes and not included in the price of your home. Façades may not be accurate. This is due to house type, size, house design and house width. Subject to estate and council guidelines. For detailed home pricing and façade information, please speak to a New Home Advisor.