

Malachite 18



3



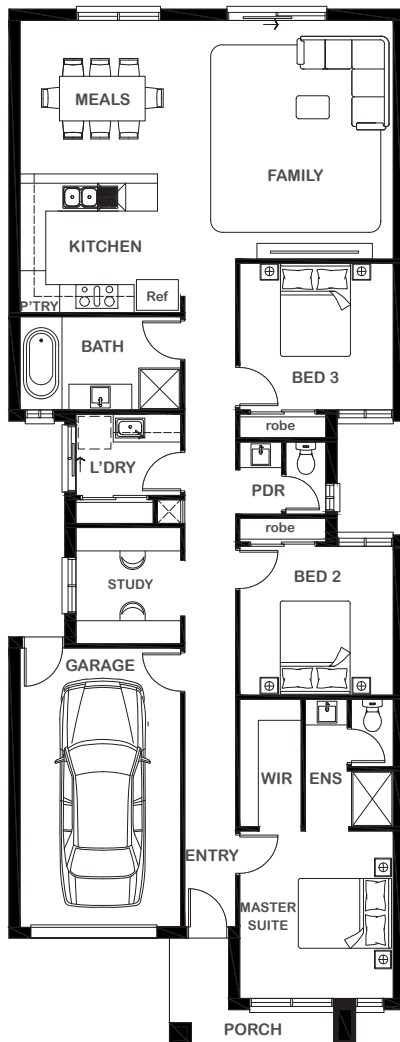
2



1



1



Overall Width x Length

8.50m x 22.25m

Total House Area

171.30m²

Suitable For Lot

8.5m x 28.0m

Room Sizes

Master Suite	3.30m x 3.60m
Bedroom 2	3.30m x 3.20m
Bedroom 3	3.30m x 3.15m
Family	4.48m x 5.13m
Study	2.25m x 2.50m
Meals	3.30m x 3.54m

Key Features

- Private master suite with walk-in robe and ensuite
- Generous sized study area
- Two spacious bedrooms
- Large open plan living and dining
- Modern central kitchen
- Single garage
- Multiple facade options

Specifications

House	142.65m ²	15.35sq
Garage	23.33m ²	2.51sq
Porch	5.32m ²	0.57sq
Total	171.30m²	18.43sq



ESSENTIA

1800 XIRCON (1800 947 266)
xirconhomes.com.au

All images and illustrations featured on Xircon Homes' website and in any advertisements are solely for illustrative purposes and are intended to be used as a guide only. Photographs and floor plans may depict specifications not currently provided by Xircon Homes and not included in the price of your home. Façades may not be accurate. This is due to house type, size, house design and house width. Subject to estate and council guidelines. For detailed home pricing and façade information, please speak to a New Home Advisor.