

# Marit 17



3



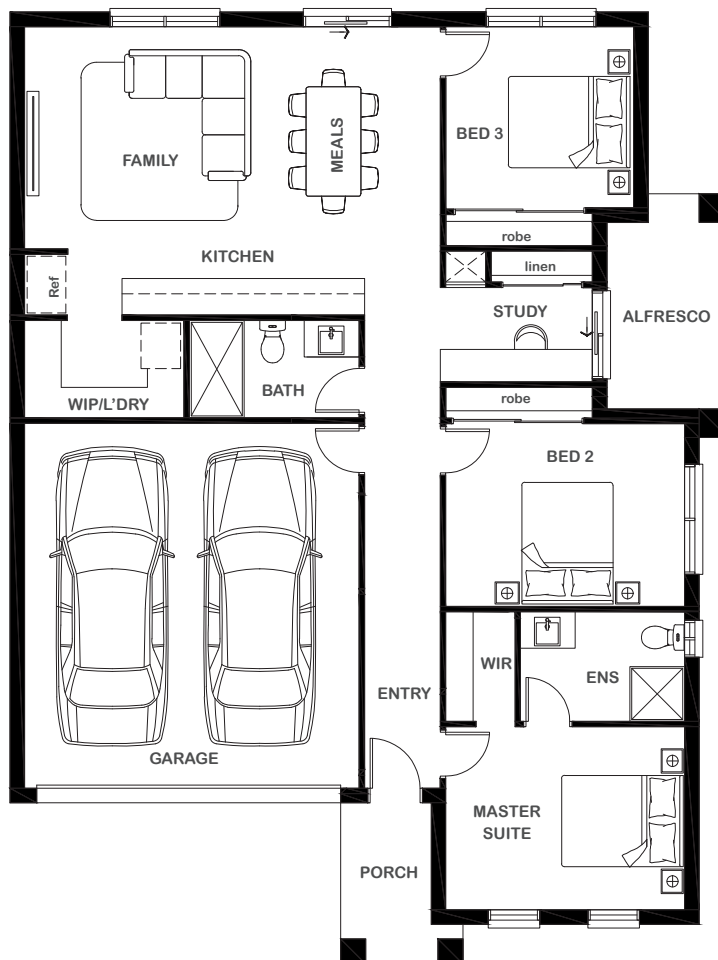
2



1



2



## Overall Width x Length

11.33m x 16.65m

## Total House Area

159.76m<sup>2</sup>

## Suitable For Lot

14.0m x 21.0m

## Room Sizes

Master Suite	3.01m x 3.93m
Bedroom 2	3.00m x 3.93m
Bedroom 3	3.00m x 3.09m
Family	4.18m x 4.13m
Meals	4.18m x 2.70m
Study	1.55m x 3.18m

## Key Features

Three-bedroom single storey home total  
 Master suite with ensuite and walk-in robe  
 Double garage with direct entry to home  
 Open plan living and dining  
 Study retreat  
 Walk in pantry and modern laundry  
 Multiple facade options

## Specifications

House	112.74m <sup>2</sup>	12.13sq
Garage	35.82m <sup>2</sup>	3.85sq
Alfresco	6.92m <sup>2</sup>	0.75m <sup>2</sup>
Porch	4.28m <sup>2</sup>	0.46m <sup>2</sup>
<b>Total</b>	<b>159.76m<sup>2</sup></b>	<b>17.19sq</b>



ESSENTIA

1800 XIRCON (1800 947 266)  
[xirconhomes.com.au](http://xirconhomes.com.au)

All images and illustrations featured on Xircon Homes' website and in any advertisements are solely for illustrative purposes and are intended to be used as a guide only. Photographs and floor plans may depict specifications not currently provided by Xircon Homes and not included in the price of your home. Façades may not be accurate. This is due to house type, size, house design and house width. Subject to estate and council guidelines. For detailed home pricing and façade information, please speak to a New Home Advisor.