

Mica 22



4



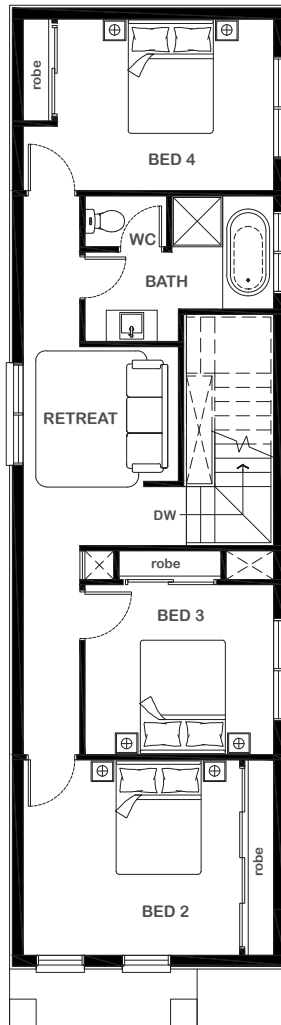
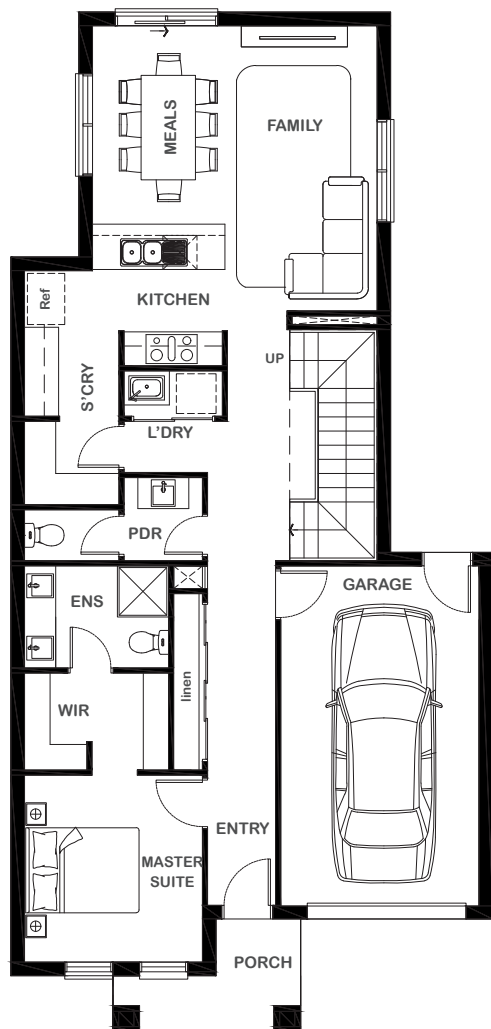
2



2



1



Overall Width x Length

8.50m x 18.0m

Total House Area

205.38m²

Suitable For Lot

8.5m x 25.0m

Room Sizes

Master Suite	3.14m x 3.30m
Bedroom 2	3.82m x 3.30m
Bedroom 3	3.33m x 3.00m
Bedroom 4	3.82m x 3.03m
Retreat	2.74m x 2.38m
Family	2.69m x 5.27m
Meals	2.34m x 3.50m

Key Features

Double storey home with three bedrooms on first floor
 One grand private master on ground floor
 Centralised kitchen with lavish scullery
 Open-plan design
 Single garage
 Retreat zone on first floor
 Multiple facade options

Specifications

Ground Floor	92.77m ²	9.99sq
First Floor	83.30m ²	8.96sq
Garage	24.51m ²	2.63sq
Porch	4.80m ²	0.52sq
Total	205.38m²	22.10sq



1800 XIRCON (1800 947 266)
xirconhomes.com.au

All images and illustrations featured on Xircon Homes' website and in any advertisements are solely for illustrative purposes and are intended to be used as a guide only. Photographs and floor plans may depict specifications not currently provided by Xircon Homes and not included in the price of your home. Façades may not be accurate. This is due to house type, size, house design and house width. Subject to estate and council guidelines. For detailed home pricing and façade information, please speak to a New Home Advisor.