

Morganite 27



4



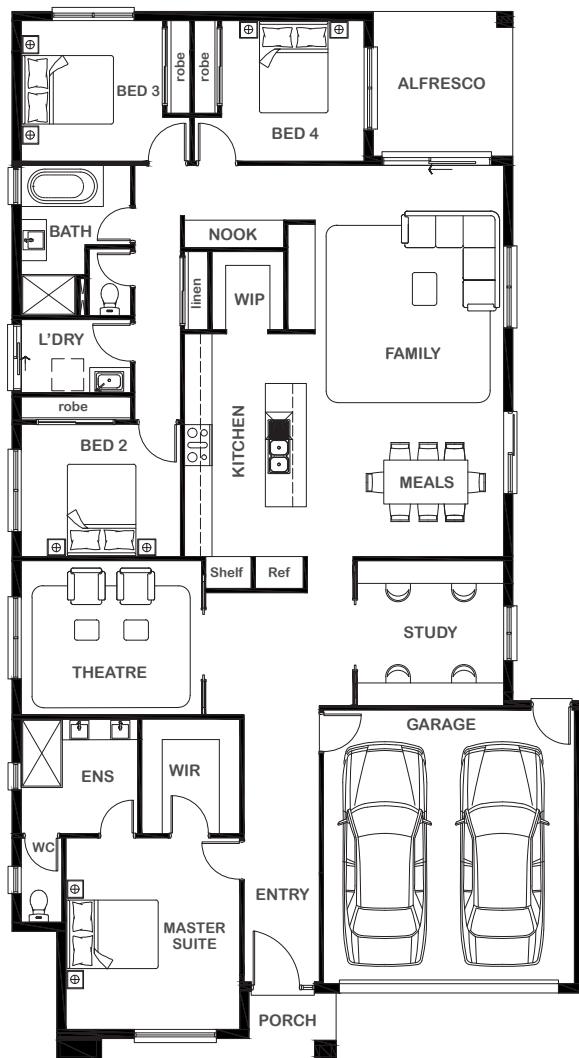
2



2



2



Overall Width x Length

12.52m x 23.01m

Total House Area

253.69m²

Suitable For Lot

14.0m x 30.0m

Room Sizes

Master Suite	3.81m x 4.20m
Bedroom 2	3.49m x 2.90m
Bedroom 3	3.10m x 3.08m
Bedroom 4	3.12m x 3.08m
Theatre	3.95m x 3.38m
Family	4.13m x 5.20m
Meals	4.32m x 3.37m
Study	3.21m x 3.18m

Key Features

Grand master suite with adjoining ensuite and walk-in robe
 Three spacious bedrooms
 Large sheltered alfresco connected to open plan dining and live area
 Study space
 Private theatre located upon entrance
 Double garage
 Large laundry
 Multiple facade options

Specifications

House	202.36m ²	21.78sq
Garage	36.61m ²	3.94sq
Alfresco	9.69m ²	1.04sq
Porch	5.03m ²	0.54sq
Total	253.69m²	27.30sq



1800 XIRCON (1800 947 266)
xirconhomes.com.au

All images and illustrations featured on Xircon Homes' website and in any advertisements are solely for illustrative purposes and are intended to be used as a guide only. Photographs and floor plans may depict specifications not currently provided by Xircon Homes and not included in the price of your home. Façades may not be accurate. This is due to house type, size, house design and house width. Subject to estate and council guidelines. For detailed home pricing and façade information, please speak to a New Home Advisor.