

Obsidian 33



4



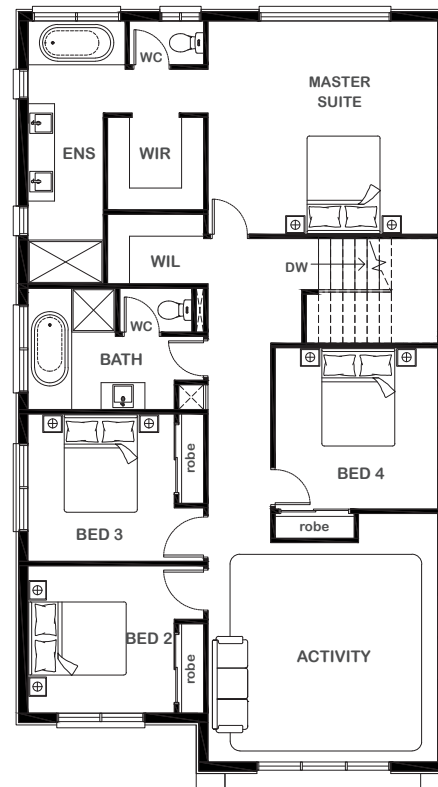
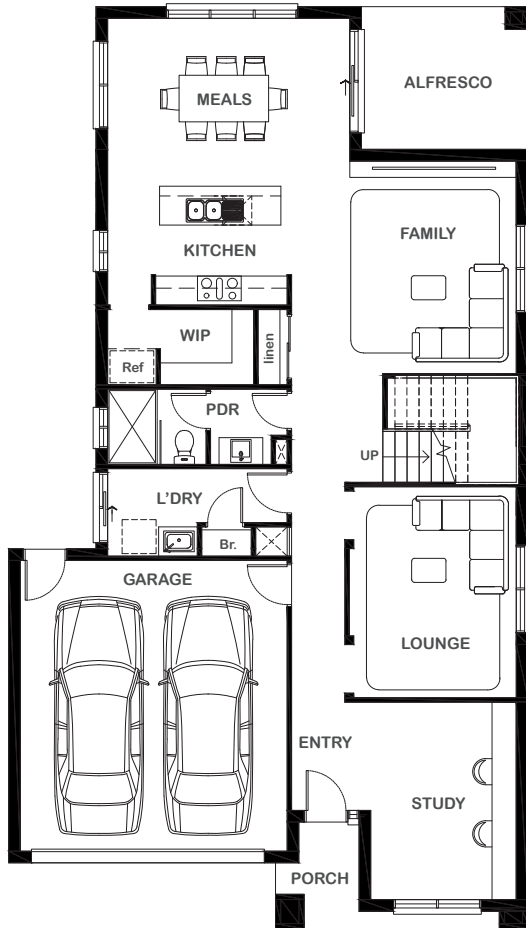
3



4



2



Overall Width x Length

10.7m x 19.0m

Total House Area

308.6m²

Suitable For Lot

12.5m x 28.0m

Room Sizes

Master Suite	4.72m x 4.38m
Bedroom 2	3.00m x 3.03m
Bedroom 3	3.01m x 3.03m
Bedroom 4	3.34m x 3.32m
Lounge	3.35m x 4.35m
Activity	4.50m x 4.72m
Family	4.63m x 4.38m
Study	3.00m x 4.07m
Meals	4.99m x 3.46m

Key Features

- Grand master suite with ensuite, walk-in robe
- Three other generous sized bedrooms
- Spacious study room upon entrance
- Large family area located to the rear of the house
- Modern kitchen with scullery
- Open-plan living
- Separate formal lounge
- Alfresco
- Double garage
- Large laundry
- Multiple facade options

Specifications

Ground Floor	122.24m ²	13.15sq
First Floor	134.34m ²	14.46sq
Alfresco	10.08m ²	1.09sq
Garage	37.31m ²	4.01sq
Porch	4.63m ²	0.5sq
Total	308.60m²	33.21sq



1800 XIRCON (1800 947 266)
xirconhomes.com.au

All images and illustrations featured on Xircon Homes' website and in any advertisements are solely for illustrative purposes and are intended to be used as a guide only. Photographs and floor plans may depict specifications not currently provided by Xircon Homes and not included in the price of your home. Façades may not be accurate. This is due to house type, size, house design and house width. Subject to estate and council guidelines. For detailed home pricing and façade information, please speak to a New Home Advisor.