

Onyx 23



4



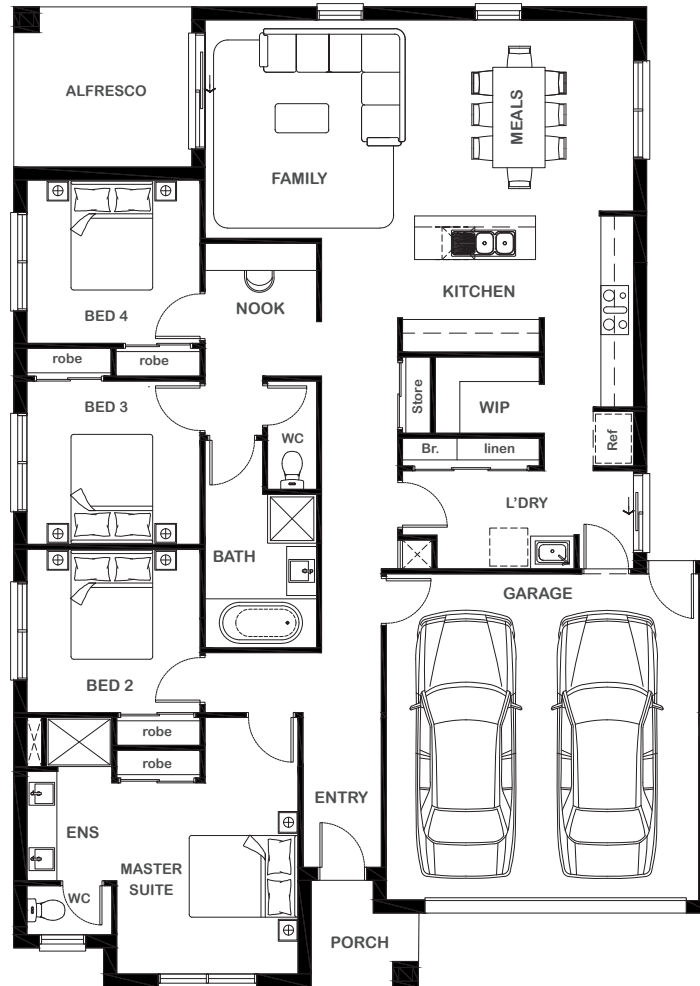
2



1



2



Overall Width x Length

12.82m x 18.0m

Total House Area

210.03m²

Suitable For Lot

14.0m x 25.0m

Room Sizes

Master Suite	3.33m x 3.51m
Bedroom 2	3.18m x 3.00m
Bedroom 3	3.18m x 3.00m
Bedroom 4	3.18m x 3.00m
Family	3.85m x 4.01m
Meals	4.02m x 3.51m
Study	2.05m x 2.44m

Key Features

- Luxurious master suite with ensuite
- Double garage
- Four bedrooms total
- Open plan living and dining
- Elegant outdoor alfresco
- Large modern central kitchen with walk-in pantry
- Nook perfect for quiet study
- Multiple facade options

Specifications

House	158.36m ²	17.05sq
Garage	38.7m ²	4.17sq
Alfresco	9.61m ²	1.04sq
Porch	3.36m ²	0.36sq
Total	210.03m²	22.60sq



1800 XIRCON (1800 947 266)
xirconhomes.com.au

All images and illustrations featured on Xircon Homes' website and in any advertisements are solely for illustrative purposes and are intended to be used as a guide only. Photographs and floor plans may depict specifications not currently provided by Xircon Homes and not included in the price of your home. Façades may not be accurate. This is due to house type, size, house design and house width. Subject to estate and council guidelines. For detailed home pricing and façade information, please speak to a New Home Advisor.