

# Opal 27



4



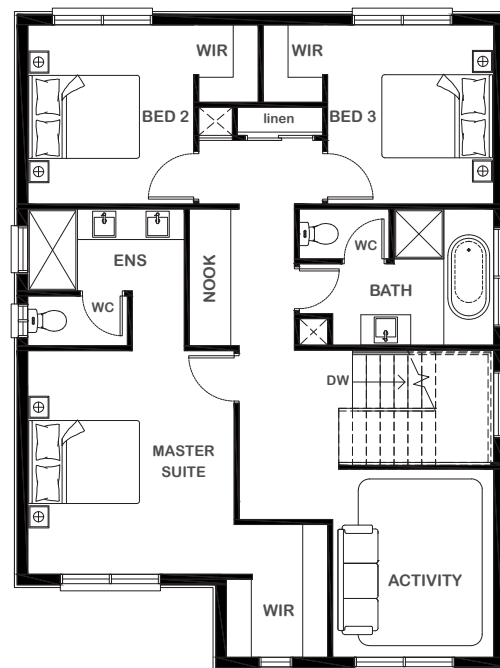
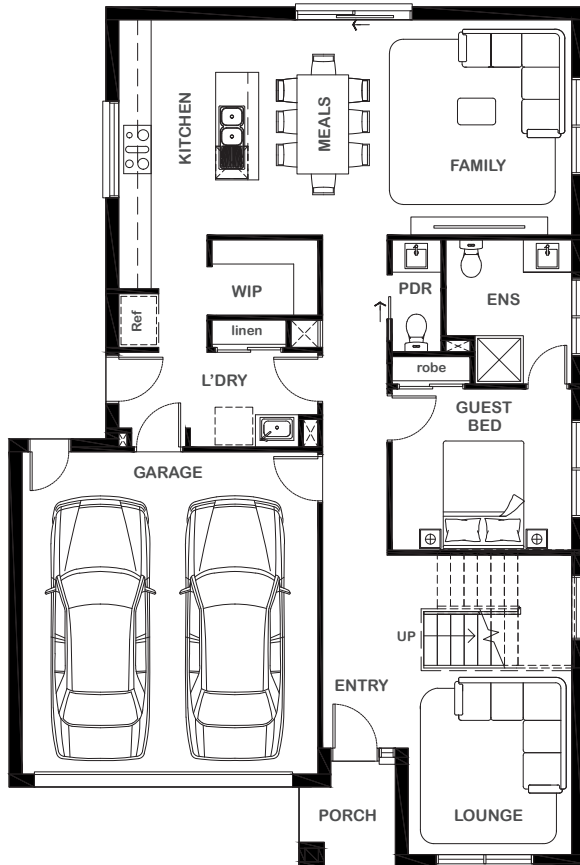
3



2



2



### Overall Width x Length

10.7m x 16.0m

### Total House Area

247.20m<sup>2</sup>

### Suitable For Lot

12.5m x 25.0m

### Room Sizes

Master Suite	3.73m x 4.04m
Bedroom 2	3.00m x 3.24m
Bedroom 3	3.00m x 3.24m
Guest Bed	3.34m x 3.00m
Lounge	3.04m x 3.42m
Activity	2.91m x 3.40m
Family	3.43m x 4.00m
Meals	2.39m x 4.00m

### Key Features

- Indulgent master suite with private walk-in robe and ensuite
- Upstairs activity room
- Downstairs guest suite with private ensuite and robe
- Open plan design
- Modern kitchen with expansive scullery
- Multiple facade options

### Specifications

Ground Floor	108.14m <sup>2</sup>	11.64sq
First Floor	98.54m <sup>2</sup>	10.61sq
Garage	37.26m <sup>2</sup>	4.01sq
Porch	3.26m <sup>2</sup>	0.35sq
<b>Total</b>	<b>247.20m<sup>2</sup></b>	<b>26.61sq</b>



1800 XIRCON (1800 947 266)  
xirconhomes.com.au

All images and illustrations featured on Xircon Homes' website and in any advertisements are solely for illustrative purposes and are intended to be used as a guide only. Photographs and floor plans may depict specifications not currently provided by Xircon Homes and not included in the price of your home. Façades may not be accurate. This is due to house type, size, house design and house width. Subject to estate and council guidelines. For detailed home pricing and façade information, please speak to a New Home Advisor.