

Peridot 29



4



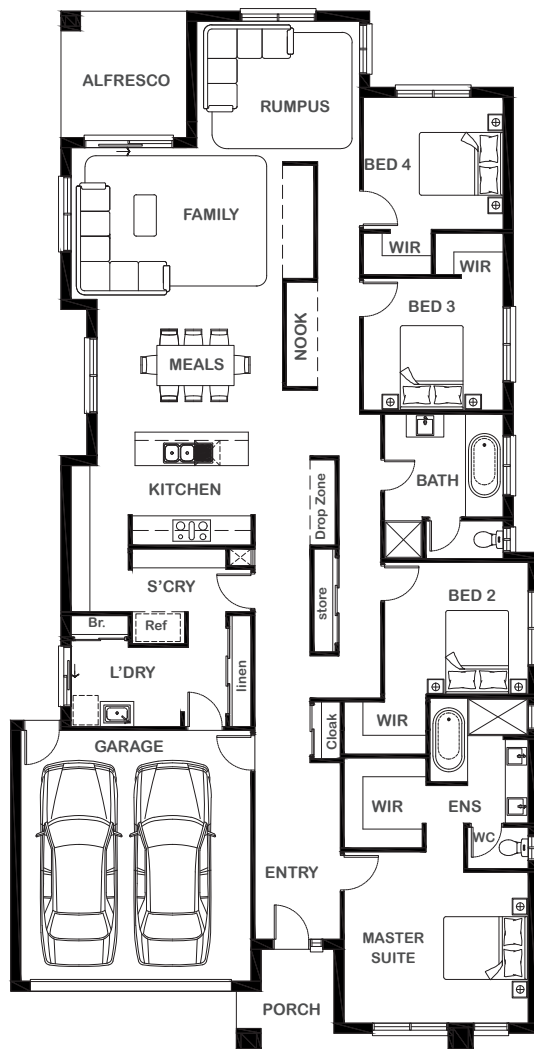
2



2



2



Overall Width x Length

12.6m x 24.88m

Total House Area

268.29m²

Suitable For Lot

14.0m x 32.0m

Room Sizes

Master Suite	4.40m x 3.60m
Bedroom 2	3.43m x 3.15m
Bedroom 3	3.34m x 3.15m
Bedroom 4	3.34m x 3.15m
Rumpus	3.89m x 3.35m
Family	5.05m x 3.62m
Meals	4.43m x 3.17m
Nook	0.75m x 2.49m

Key Features

Grand private master with walk-in robe and ensuite
 Three generous sized bedrooms
 Open plan living
 Plenty of living space with the addition of a rumpus area
 Modern kitchen with spacious scullery
 Double garage
 Alfresco
 Multiple facade options

Specifications

House	216.35m ²	23.28sq
Garage	36.10m ²	3.88sq
Alfresco	9.06m ²	0.98sq
Porch	6.78m ²	0.73sq
Total	268.29m²	28.87sq



1800 XIRCON (1800 947 266)
xirconhomes.com.au

All images and illustrations featured on Xircon Homes' website and in any advertisements are solely for illustrative purposes and are intended to be used as a guide only. Photographs and floor plans may depict specifications not currently provided by Xircon Homes and not included in the price of your home. Façades may not be accurate. This is due to house type, size, house design and house width. Subject to estate and council guidelines. For detailed home pricing and façade information, please speak to a New Home Advisor.