

Quartz 21



4



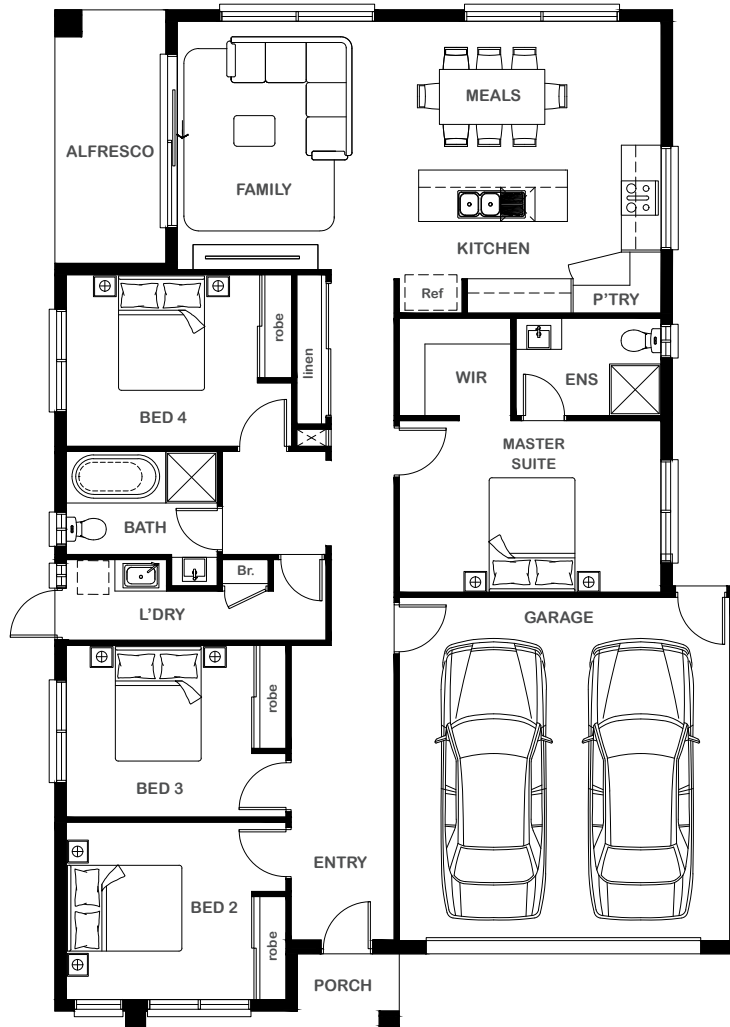
2



1



2



Overall Width x Length

12.0m x 17.85m

Total House Area

193.59m²

Suitable For Lot

14.0m x 25.0m

Room Sizes

Master Suite	4.58m x 3.16m
Bedroom 2	3.24m x 3.10m
Bedroom 3	3.24m x 3.00m
Bedroom 4	3.34m x 3.00m
Family	3.88m x 4.84m
Meals	4.66m x 2.50m

Key Features

- Three generous sized bedrooms with inbuilt robes
- Private master suite with dual walk-in robe, and large resort-style ensuite
- Double garage
- Large alfresco
- Large laundry
- Elegant and contemporary kitchen
- Open plan dining and living area
- Multiple facade options

Specifications

House	144.03m ²	15.50sq
Garage	37.53m ²	4.04sq
Alfresco	8.58m ²	0.92sq
Porch	3.45m ²	0.37sq
Total	193.59m²	20.83sq



ESSENTIA

1800 XIRCON (1800 947 266)
xirconhomes.com.au

All images and illustrations featured on Xircon Homes' website and in any advertisements are solely for illustrative purposes and are intended to be used as a guide only. Photographs and floor plans may depict specifications not currently provided by Xircon Homes and not included in the price of your home. Façades may not be accurate. This is due to house type, size, house design and house width. Subject to estate and council guidelines. For detailed home pricing and façade information, please speak to a New Home Advisor.