

Rhodonite 20



4



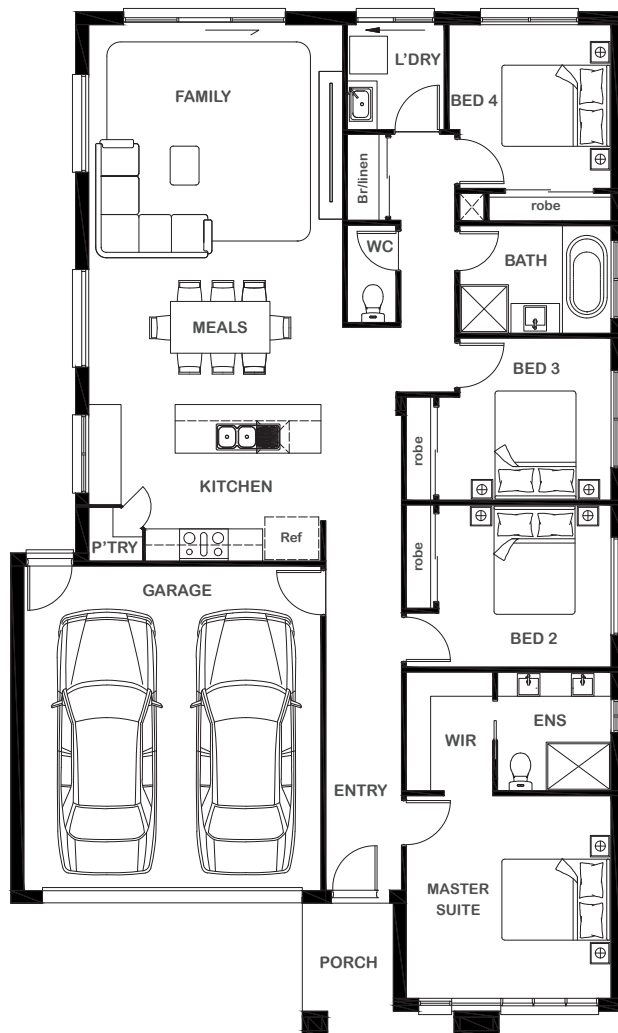
2



1



2



Overall Width x Length

11.35m x 18.97m

Total House Area

188.87m²

Suitable For Lot

12.5m x 25.0m

Room Sizes

| | |
|--------------|---------------|
| Master Suite | 3.79m x 3.75m |
| Bedroom 2 | 3.19m x 3.00m |
| Bedroom 3 | 2.80m x 3.00m |
| Bedroom 4 | 2.80m x 3.03m |
| Family | 4.70m x 4.53m |
| Meals | 4.70m x 2.50m |

Key Features

Large centralised modern kitchen with spacious walk-in pantry
 Luxurious resort-style master suite with walk-in robe and ensuite
 4 generous sized bedrooms in total
 Sweeping open plan living and dining area
 Double garage with entry leading into the home
 Generous sized laundry
 Multiple facade options

Specifications

| | | |
|--------------|----------------------------|----------------|
| House | 147.63m ² | 15.89sq |
| Garage | 36.16m ² | 3.89sq |
| Porch | 5.08m ² | 0.55sq |
| Total | 188.87m² | 20.33sq |



ESSENTIA

1800 XIRCON (1800 947 266)
xirconhomes.com.au

All images and illustrations featured on Xircon Homes' website and in any advertisements are solely for illustrative purposes and are intended to be used as a guide only. Photographs and floor plans may depict specifications not currently provided by Xircon Homes and not included in the price of your home. Façades may not be accurate. This is due to house type, size, house design and house width. Subject to estate and council guidelines. For detailed home pricing and façade information, please speak to a New Home Advisor.