

Sapphire 44



5



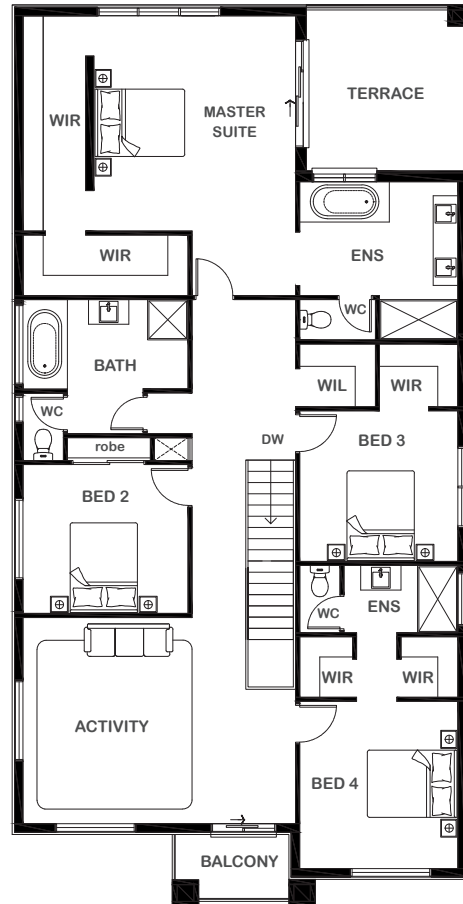
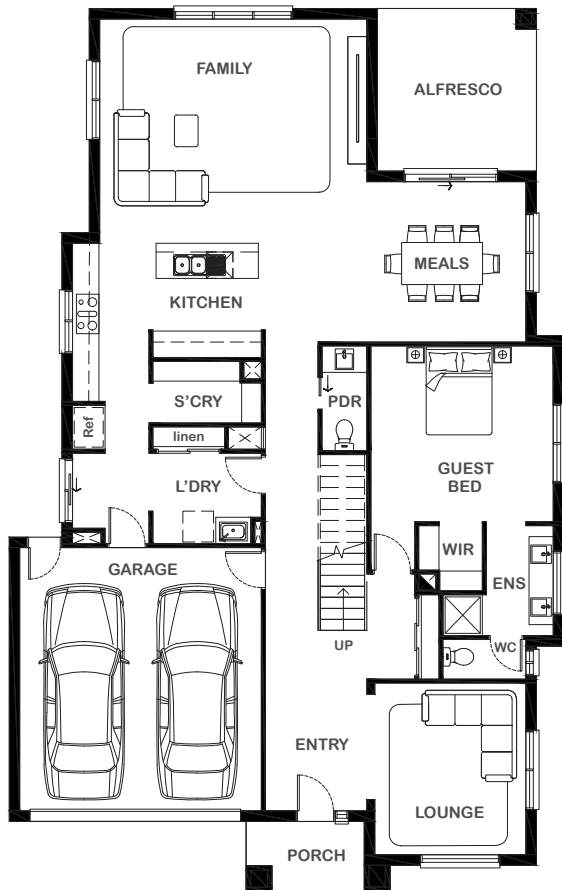
4



3



2



Overall Width x Length

12.62m x 20.10m

Total House Area

414.0m²

Suitable For Lot

14.0m x 28.0m

Room Sizes

Master Suite	4.50m x 4.80m
Bedroom 2	3.68m x 3.32m
Bedroom 3	3.53m x 3.36m
Bedroom 4	3.53m x 3.71m
Guest Bed	4.15m x 4.00m
Activity	4.60m x 4.97m
Lounge	3.44m x 3.91m
Family	6.08m x 5.10m
Meals	4.13m x 3.65m

Key Features

Grand master suite with ensuite, walk-in robe and private terrace
 Spacious guest suite with ensuite and walk-in robe
 Three other generous sized bedrooms
 Large family area located to the rear of the house
 Modern kitchen with scullery
 Open-plan living
 Separate formal lounge
 Alfresco
 Double garage
 Large laundry
 Multiple facade options

Specifications

Ground Floor	163.20m ²	17.57sq
First Floor	178.95m ²	19.26sq
Alfresco	13.39m ²	1.44sq
Garage	36.10m ²	3.88sq
Balcony	4.29m ²	0.46sq
Terrace	13.39m ²	1.44sq
Porch	4.67m ²	0.51sq
Total	414.0m²	44.56sq



1800 XIRCON (1800 947 266)
xirconhomes.com.au

All images and illustrations featured on Xircon Homes' website and in any advertisements are solely for illustrative purposes and are intended to be used as a guide only. Photographs and floor plans may depict specifications not currently provided by Xircon Homes and not included in the price of your home. Façades may not be accurate. This is due to house type, size, house design and house width. Subject to estate and council guidelines. For detailed home pricing and façade information, please speak to a New Home Advisor.