

Spinel 40



5



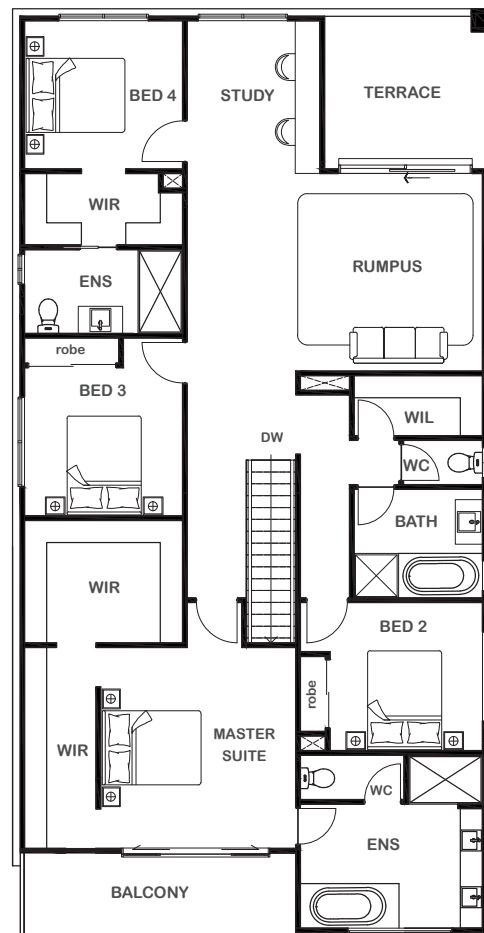
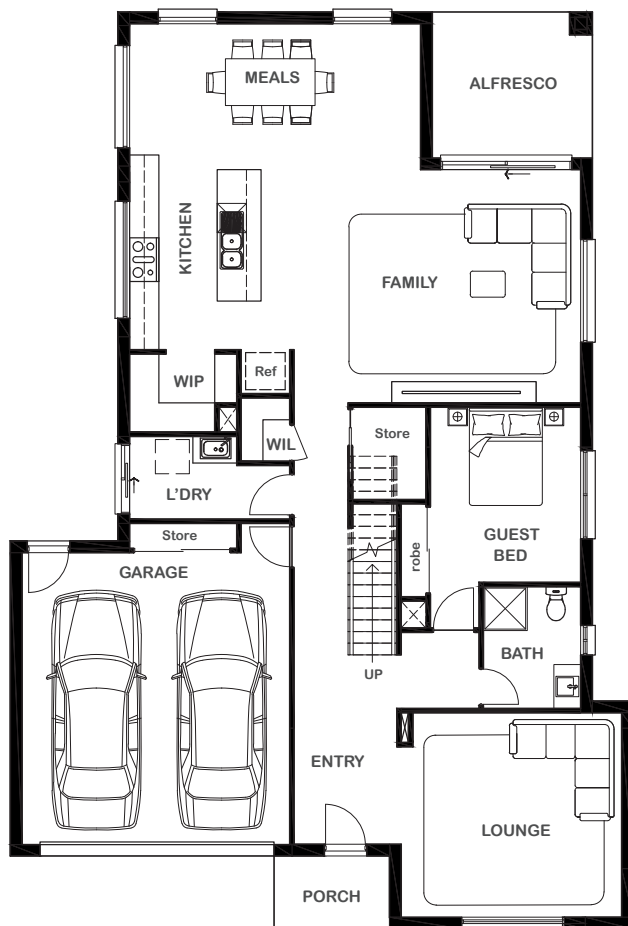
4



3



2



Overall Width x Length

12.8m x 18.84m

Total House Area

374.09m²

Suitable For Lot

14.0m x 26.0m

Room Sizes

Master Suite	3.95m x 4.06m
Bedroom 2	3.09m x 3.00m
Bedroom 3	3.20m x 3.00m
Bedroom 4	3.20m x 3.00m
Guest Bed	3.09m x 3.60m
Rumpus	5.98m x 4.00m
Lounge	4.29m x 4.20m
Family	5.89m x 4.79m
Study	2.69m x 3.09m
Meals	5.98m x 2.70m

Key Features

Grand master suite with ensuite, walk-in robe and private terrace
 Two Spacious guest suite with ensuite and walk-in robe
 Two other generous sized bedrooms
 Large family area located to the rear of the house
 Modern kitchen with scullery
 Open-plan living
 Separate formal lounge
 Alfresco
 Double garage
 Large laundry
 Multiple facade options

Specifications

Ground Floor	144.33m ²	15.54sq
First Floor	156.05m ²	16.80sq
Alfresco	9.87m ²	1.06sq
Garage	39.35m ²	4.24sq
Balcony	9.82m ²	1.05sq
Terrace	10.17m ²	1.09sq
Porch	3.56m ²	0.38sq
Total	374.09m²	40.26sq



1800 XIRCON (1800 947 266)
xirconhomes.com.au

All images and illustrations featured on Xircon Homes' website and in any advertisements are solely for illustrative purposes and are intended to be used as a guide only. Photographs and floor plans may depict specifications not currently provided by Xircon Homes and not included in the price of your home. Façades may not be accurate. This is due to house type, size, house design and house width. Subject to estate and council guidelines. For detailed home pricing and façade information, please speak to a New Home Advisor.