

Sunstone 25



4



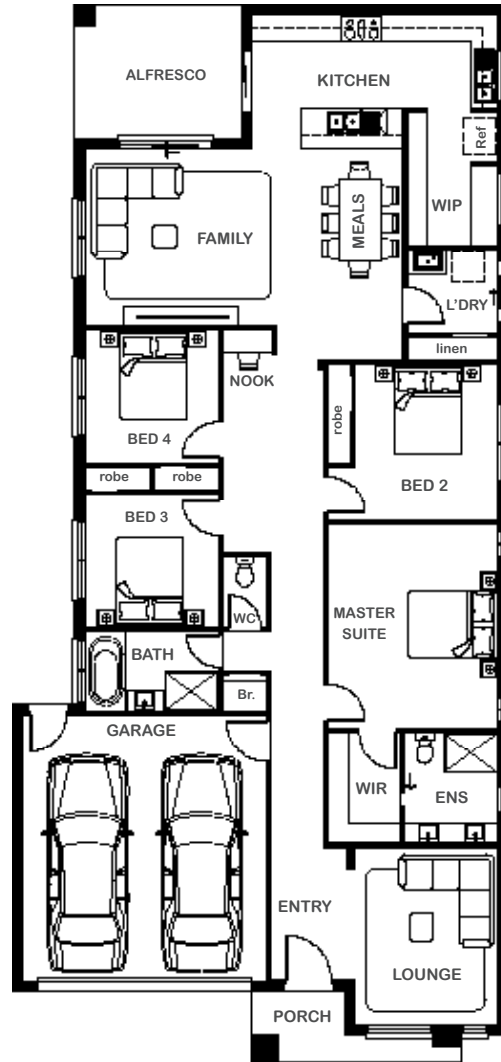
2



2



2



Overall Width x Length

11.18m x 23.82m

Total House Area

235.03m²

Suitable For Lot

12.5m x 32.0m

Room Sizes

Master Suite	3.82m x 4.61m
Bedroom 2	3.22m x 3.50m
Bedroom 3	3.00m x 3.00m
Bedroom 4	3.00m x 3.00m
Lounge	3.22m x 4.00m
Family	4.29m x 4.00m
Meals	2.31m x 4.78m
Nook	1.11m x 0.50m

Key Features

- 4 generous sized bedrooms total
- One grand master suite complete with walk-in robe and ensuite
- Sprawling open plan living and dining
- Grand and luxurious kitchen with walk-in pantry
- Separate Lounge located upon entrance
- Double garage
- Spacious alfresco
- Multiple facade options

Specifications

House	182.69m ²	19.66sq
Garage	36.15m ²	3.89sq
Alfresco	11.28m ²	1.22sq
Porch	4.91m ²	0.53sq
Total	235.03m²	25.30sq



1800 XIRCON (1800 947 266)
xirconhomes.com.au

All images and illustrations featured on Xircon Homes' website and in any advertisements are solely for illustrative purposes and are intended to be used as a guide only. Photographs and floor plans may depict specifications not currently provided by Xircon Homes and not included in the price of your home. Façades may not be accurate. This is due to house type, size, house design and house width. Subject to estate and council guidelines. For detailed home pricing and façade information, please speak to a New Home Advisor.