

# Topaz 25



3



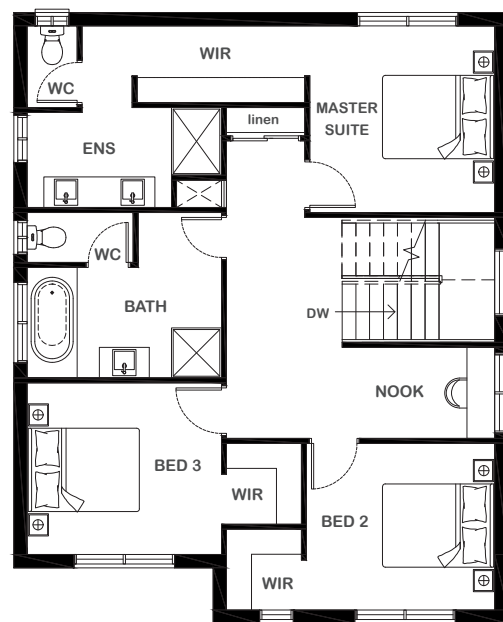
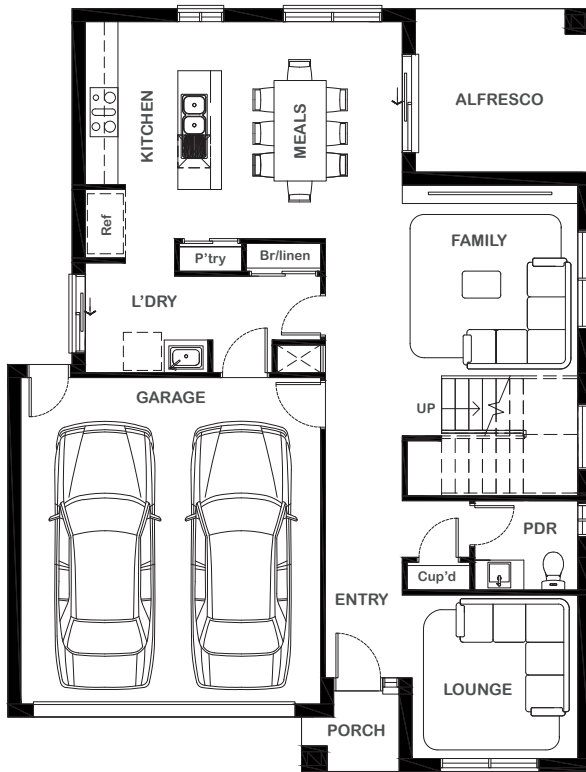
2



2



2



## Overall Width x Length

10.7m x 14.0m

## Total House Area

231.03m<sup>2</sup>

## Suitable For Lot

12.5m x 21.0m

## Room Sizes

Master Suite	3.36m x 3.30m
Bedroom 2	3.39m x 3.00m
Bedroom 3	3.50m x 3.09m
Lounge	3.04m x 3.00m
Family	3.22m x 3.50m
Study	1.64m x 2.75m
Meals	3.32m x 3.00m

## Key Features

- Indulgent master suite with private walk-in robe and ensuite
- Upstairs study room
- Separate formal lounge
- Open plan design
- Modern kitchen
- Multiple facade options

## Specifications

Ground Floor	87.51m <sup>2</sup>	9.42sq
First Floor	94.31m <sup>2</sup>	10.15sq
Alfresco	9.67m <sup>2</sup>	4.00sq
Garage	37.17m <sup>2</sup>	0.26sq
Porch	2.37m <sup>2</sup>	1.04sq
<b>Total</b>	<b>231.03m<sup>2</sup></b>	<b>24.87sq</b>



ESSENTIA

1800 XIRCON (1800 947 266)  
xirconhomes.com.au

All images and illustrations featured on Xircon Homes' website and in any advertisements are solely for illustrative purposes and are intended to be used as a guide only. Photographs and floor plans may depict specifications not currently provided by Xircon Homes and not included in the price of your home. Façades may not be accurate. This is due to house type, size, house design and house width. Subject to estate and council guidelines. For detailed home pricing and façade information, please speak to a New Home Advisor.