

Tourmaline 26



4



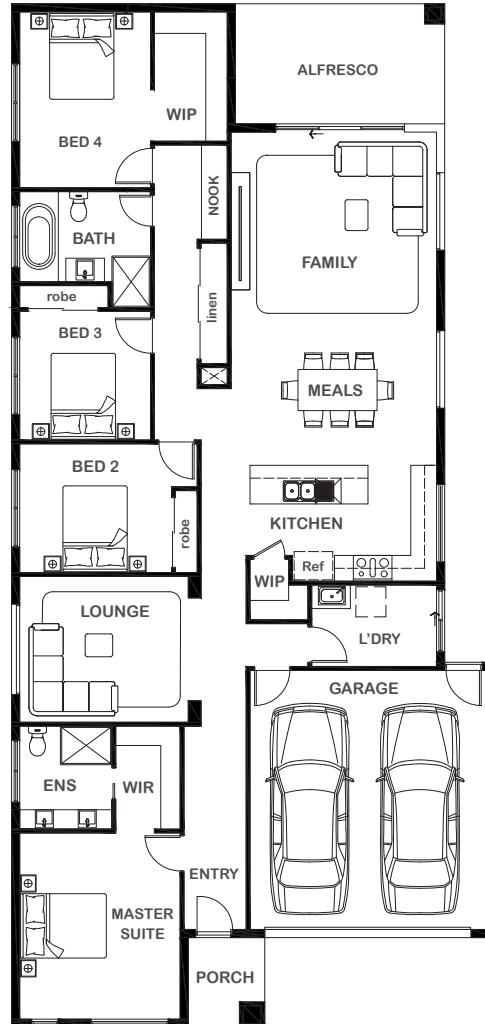
2



2



2



Overall Width x Length

11.35m x 23.86m

Total House Area

239.92m²

Suitable For Lot

12.5m x 32.0m

Room Sizes

Master Suite	4.34m x 3.74m
Bedroom 2	3.54m x 3.00m
Bedroom 3	3.05m x 3.00m
Bedroom 4	3.05m x 3.25m
Lounge	3.93m x 3.40m
Family	4.79m x 4.22m
Meals	4.79m x 3.50m
Nook	0.50m x 2.50m

Key Features

Large resort-style private master suite with ensuite and walk-in robe
 Four spacious bedrooms, two with ensuites
 Luxurious kitchen with large island bench and walk-in pantry
 Open dining and family area
 Large alfresco adjacent to the family area
 3 bathrooms total
 Separate lounge
 Double garage with direct access to inside
 Multiple facade options

Specifications

House	185.55m ²	19.97sq
Garage	36.98m ²	3.97sq
Alfresco	13.66m ²	1.47sq
Porch	3.73m ²	0.41sq
Total	239.92m²	25.82sq



1800 XIRCON (1800 947 266)
xirconhomes.com.au

All images and illustrations featured on Xircon Homes' website and in any advertisements are solely for illustrative purposes and are intended to be used as a guide only. Photographs and floor plans may depict specifications not currently provided by Xircon Homes and not included in the price of your home. Façades may not be accurate. This is due to house type, size, house design and house width. Subject to estate and council guidelines. For detailed home pricing and façade information, please speak to a New Home Advisor.