

Turquoise 35



5



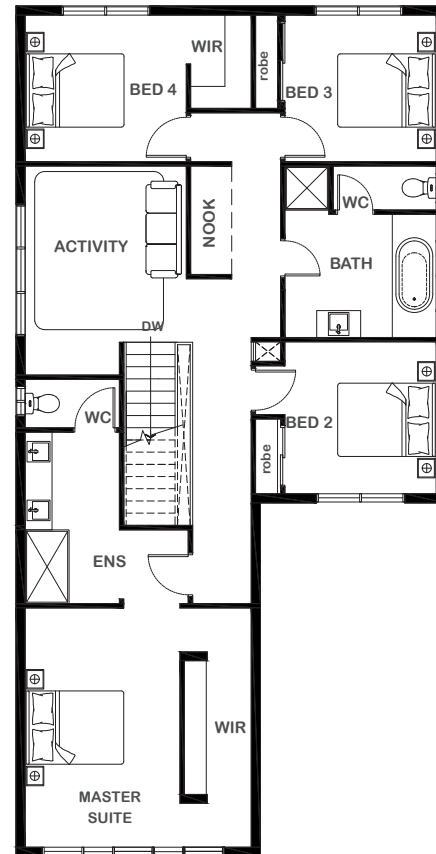
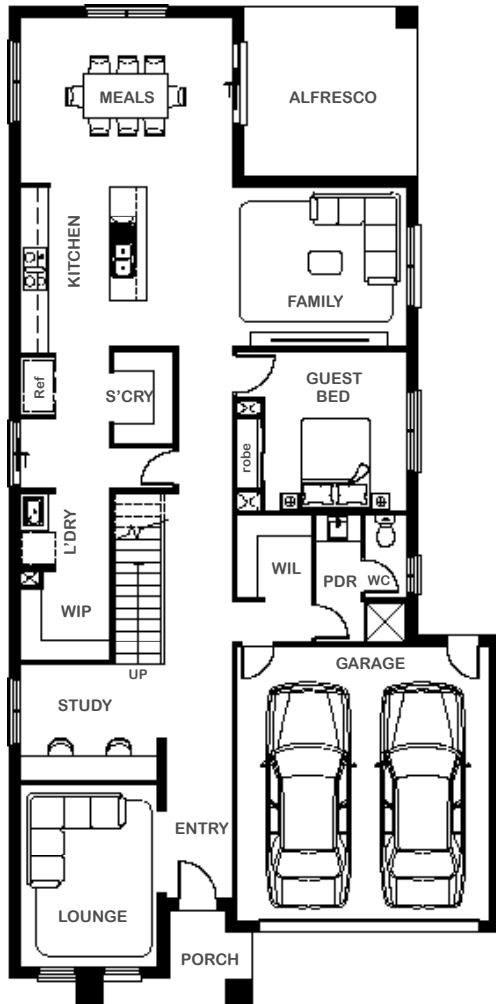
3



3



2



Overall Width x Length

10.7m x 21.8m

Total House Area

324.94m²

Suitable For Lot

12.5m x 30.0m

Room Sizes

Master Suite	3.17m x 4.90m
Bedroom 2	3.10m x 3.11m
Bedroom 3	3.10m x 3.00m
Bedroom 4	3.30m x 3.00m
Guest Bed	3.10m x 3.50m
Lounge	2.99m x 4.00m
Activity	3.61m x 3.30m
Family	3.79m x 3.50m
Meals	4.63m x 3.59m

Key Features

Grand master suite with ensuite and walkin robe
Spacious guest suite
Three other generous sized bedrooms
Large family area located to the rear of the house
Modern kitchen with scullery
Open-plan living
Separate formal lounge
Alfresco
Double garage
Large laundry
Multiple facade options

Specifications

Ground Floor	143.05m ²	15.40sq
First Floor	125.86m ²	13.55sq
Alfresco	13.95m ²	1.50sq
Garage	37.32m ²	4.02sq
Porch	4.76m ²	0.51sq
Total	324.94m²	34.98sq



1800 XIRCON (1800 947 266)
xirconhomes.com.au