

# Unikite 20



4



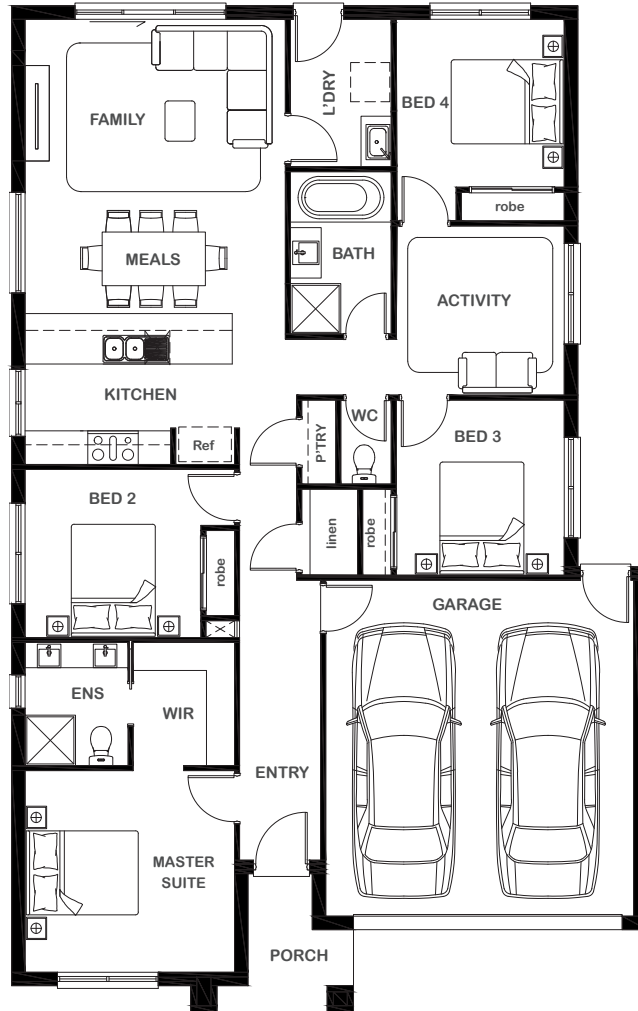
2



2



2



## Overall Width x Length

11.35m x 18.47m

## Total House Area

187.32m<sup>2</sup>

## Suitable For Lot

12.5m x 25.0m

## Room Sizes

Master Suite	3.74m x 3.60m
Bedroom 2	3.14m x 3.00m
Bedroom 3	3.00m x 3.13m
Bedroom 4	3.00m x 3.50m
Activity	3.62m x 3.00m
Family	4.65m x 3.59m
Meals	2.01m x 2.50m
Store	1.00m x 1.53m

## Key Features

- Private master suite with walk-in robe and resort-style ensuite
- Open plan living, dining and kitchen area
- Activity room
- Three additional bedrooms
- Double garage
- Large laundry
- Multiple facade options

## Specifications

House	145.61m <sup>2</sup>	15.67sq
Garage	37.31m <sup>2</sup>	4.02sq
Porch	4.40m <sup>2</sup>	0.47sq
<b>Total</b>	<b>187.32m<sup>2</sup></b>	<b>20.16sq</b>



ESSENTIA

1800 XIRCON (1800 947 266)  
xirconhomes.com.au

All images and illustrations featured on Xircon Homes' website and in any advertisements are solely for illustrative purposes and are intended to be used as a guide only. Photographs and floor plans may depict specifications not currently provided by Xircon Homes and not included in the price of your home. Façades may not be accurate. This is due to house type, size, house design and house width. Subject to estate and council guidelines. For detailed home pricing and façade information, please speak to a New Home Advisor.