

Azure 23



4



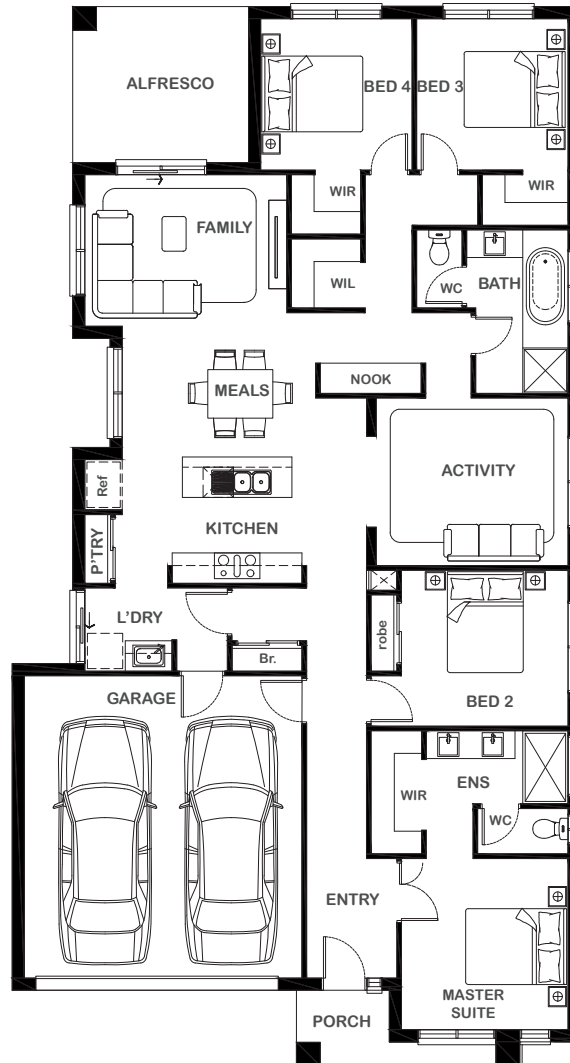
2



2



2



Overall Width x Length

20.98m x 11.25m

Total House Area

209.79m²

Suitable For Lot

12.5m x 28.0m

Room Sizes

Master Suite	3.30m x 3.39m
Bedroom 2	3.30m x 3.09m
Bedroom 3	3.00m x 3.00m
Bedroom 4	3.00m x 3.00m
Activity	3.80m x 3.32m
Family	4.00m x 3.00m
Meals	3.83m x 2.59m
Nook	2.00m x 0.60m

Key Features

- Private master suite with walk-in robe and ensuite
- Open plan living, dining and kitchen area
- Two additional bedrooms with walk-in-robe
- A single bedroom with built in robe
- Activity room
- Double garage
- Multiple facade options

Specifications

House	157.98m ²	17.00sq
Garage	37.06m ²	3.99sq
Alfresco	10.75m ²	1.16sq
Porch	4.0m ²	0.43sq
Total	209.79m²	22.58sq



ESSENTIA

1800 XIRCON (1800 947 266)
xirconhomes.com.au

All images and illustrations featured on Xircon Homes' website and in any advertisements are solely for illustrative purposes and are intended to be used as a guide only. Photographs and floor plans may depict specifications not currently provided by Xircon Homes and not included in the price of your home. Façades may not be accurate. This is due to house type, size, house design and house width. Subject to estate and council guidelines. For detailed home pricing and façade information, please speak to a New Home Advisor.