

Jacinth 40



5



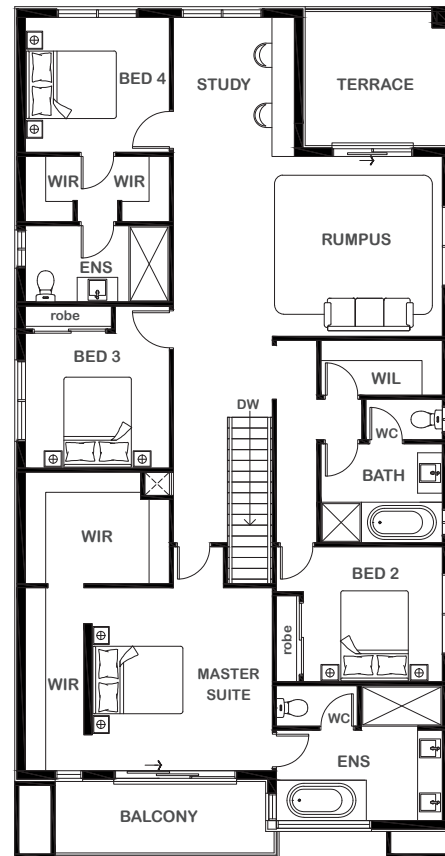
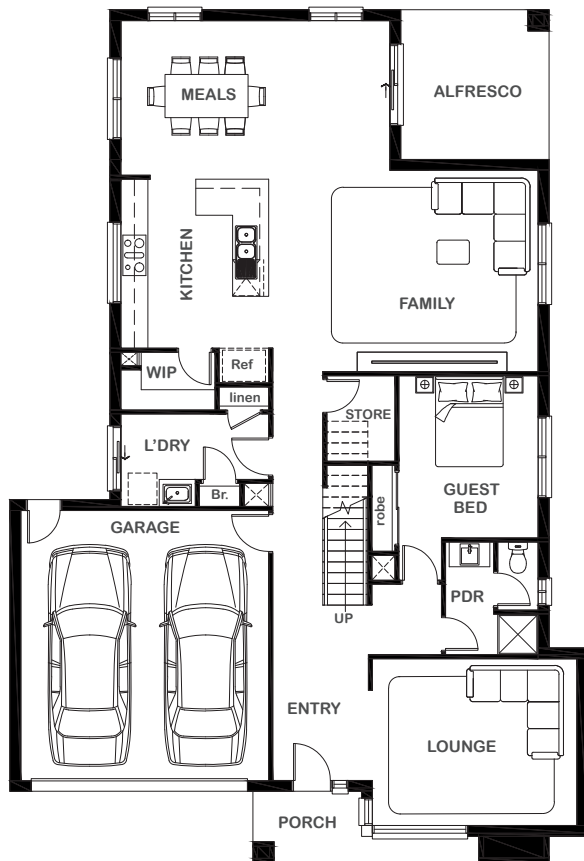
4



3



2



Overall Width x Length

12.82m x 18.93m

Total House Area

377.36m²

Suitable For Lot

14.0m x 28.0m

Room Sizes

Master Suite	4.01m x 4.07m
Bedroom 2	3.09m x 3.00m
Bedroom 3	3.20m x 3.00m
Bedroom 4	3.20m x 3.00m
Guest Bed	3.09m x 3.60m
Rumpus	5.98m x 4.00m
Lounge	4.54m x 3.70m
Family	4.78m x 4.47m
Meals	5.97m x 3.43m
Study	2.69m x 3.09m

Key Features

Grand master suite with sweeping walk-in robe, ensuite and attached balcony
Private Guest bedroom on ground floor
Three other generous sized bedrooms
Open-plan design
Alfresco and upstairs terrace
Study nook
Double garage
Multiple facade options

Specifications

Ground Floor	143.78m ²	15.47sq
First Floor	161.86m ²	1.42sq
Alfresco	10.92m ²	1.18sq
Balcony	8.13m ²	0.88sq
Terrace	10.07m ²	1.08sq
Garage	36.35m ²	3.91sq
Porch	6.25m ²	0.67sq
Total	377.36m²	40.61sq



1800 XIRCON (1800 947 266)
xirconhomes.com.au

All images and illustrations featured on Xircon Homes' website and in any advertisements are solely for illustrative purposes and are intended to be used as a guide only. Photographs and floor plans may depict specifications not currently provided by Xircon Homes and not included in the price of your home. Façades may not be accurate. This is due to house type, size, house design and house width. Subject to estate and council guidelines. For detailed home pricing and façade information, please speak to a New Home Advisor.