

Olivine 25



3



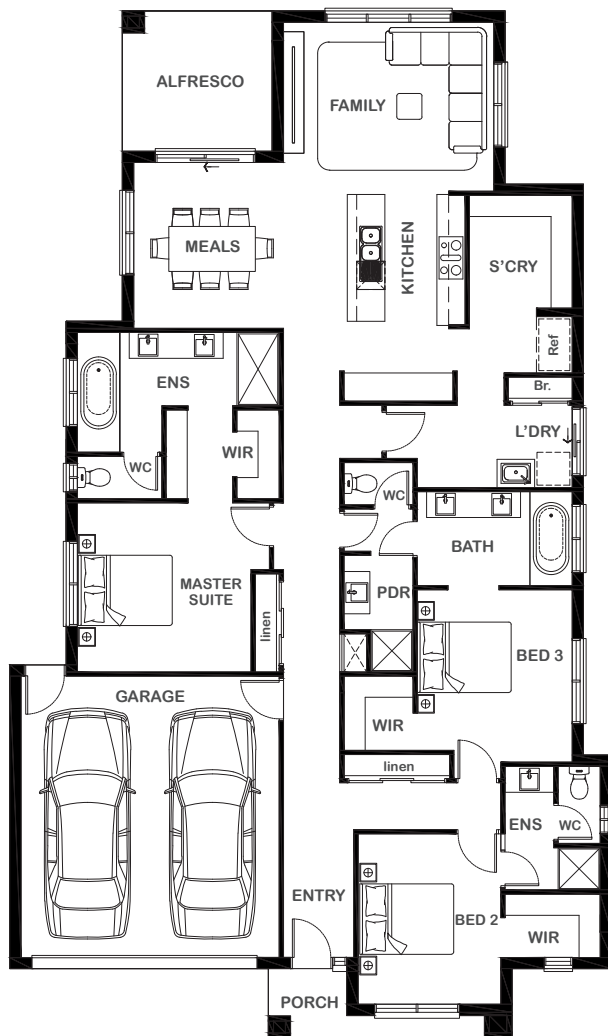
3



1



2



Overall Width x Length

12.82m x 21.88m

Total House Area

228.89m²

Suitable For Lot

14.0m x 30.0m

Room Sizes

Master Suite	3.60m x 3.90m
Bedroom 2	3.04m x 3.63m
Bedroom 3	3.30m x 3.67m
Family	4.48m x 3.60m
Meals	4.55m x 3.53m

Key Features

Two generous sized bedrooms including one resort-style master bedroom
 Each bedroom has its very own ensuite and walk-in robe
 Master bedroom features grand walk-in robe and large ensuite
 Central kitchen overlooking a spacious open plan dining and living area
 Contemporary kitchen which boasts its own walk-in pantry
 Alfresco perfect for entertain outdoors
 Double garage
 Multiple facade options

Specifications

House	179.05m ²	19.27sq
Garage	36.10m ²	3.88sq
Alfresco	9.54m ²	1.03sq
Porch	4.20m ²	0.45sq
Total	228.89m²	24.63sq



1800 XIRCON (1800 947 266)
xirconhomes.com.au

All images and illustrations featured on Xircon Homes' website and in any advertisements are solely for illustrative purposes and are intended to be used as a guide only. Photographs and floor plans may depict specifications not currently provided by Xircon Homes and not included in the price of your home. Façades may not be accurate. This is due to house type, size, house design and house width. Subject to estate and council guidelines. For detailed home pricing and façade information, please speak to a New Home Advisor.